



HOSE MASTER

CORRUGATED METAL HOSE & ASSEMBLIES



WHEN TO USE CORRUGATED METAL HOSE

There are many different types of hose available on the market, including metal, rubber, composite, PTFE, and fabric. The decision of which hose type to buy depends on the application for which the hose is being used. Generally, there are eight factors that should alert you to consider using metal hose:

1. TEMPERATURE EXTREMES

If either the temperature of the media going through the hose or the surrounding atmospheric temperature is very cold or hot, metal may be the only material that can withstand such temperature extremes.

2. CHEMICAL COMPATIBILITY

Metal hose can handle a wider variety of chemicals than most other hose types. If the hose will be exposed to aggressive chemicals (either internally or externally), metal hose should be considered.

3. PERMEATION CONCERNS

Non-metal hose is susceptible to gas permeation through the hose wall and into the atmosphere. Metal hose, on the other hand, does not allow permeation. If containing the gases inside the hose is important, metal hose may be required.

4. POTENTIAL FOR CATASTROPHIC FAILURE

When a metal hose fails, it usually develops small holes or cracks. Other hose types tend to develop larger cracks or come apart completely. If a sudden hose failure is potentially catastrophic, a metal hose may help minimize the effects of a failure by leaking product at a slower rate.

5. ABRASION AND OVERBENDING CONCERNS

To prevent abrasion and overbending, a metal hose can be used as a protective cover over wires or even other hoses.

6. FIRE SAFETY

Other hose types will melt when exposed to fire, while metal hose maintains its integrity up to 1300° F. (See NAHAD derating chart on page 33)

7. ACHIEVING FULL VACUUM

Under full vacuum, metal hose maintains its shape while other hose types may collapse.

8. FLEXIBILITY IN FITTING CONFIGURATION

Virtually any type of fitting can be attached to metal hose, while other hose types require special shanks and collars.

DESIGNING AN ASSEMBLY

Assembly ComponentsPage 3
 S.T.A.M.P.E.D.....Page 3
 Selecting a HosePage 4
 Proprietary Forming MethodsPage 5
 Braiding ProcessPage 6

HOSE

Hose Performance ChartPages 7-8
 AnnuflexPage 9
 MasterflexPage 10
 Pressureflex HP.....Page 11
 PressureMax HP®Page 12
 ChemKing®Page 13
 ChlorSafe™ (Chlorine Transfer Assembly)Page 14
 FormaflexPage 15
 BronzeflexPage 16
 ExtraflexPage 17
 HydrflexPage 18

FITTINGS

FittingsPages 19-21

LENGTH OF ASSEMBLY

Length Considerations.....Pages 22-24

FABRICATION AND SERVICES

Fabrication OptionsPage 25
 TestingPage 26
 CleaningPage 27
 PackagingPage 27

ACCESSORIES

Guard, Covers, and DocumentationPage 28
 LinerPage 29
 Armor/Bend RestrictorPage 29
 JacketPage 30
 TracerPage 30

TECHNICAL INFORMATION

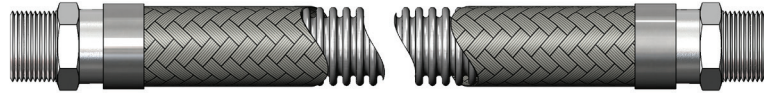
Definitions.....Pages 31-32
 Temperature Derating.....Page 33
 VelocityPage 33
 Pressure DropPage 34
 VibrationPage 35
 Do's & Don'tsPage 36
 Thread Allowance.....Page 36
 Saturated Steam.....Page 37
 Thermal Expansion of PipePage 37
 Specification Sheet.....Page 38

ABOUT HOSE MASTER

EngineeringPage 39
 Service.....Page 40
 QualityPage 41
 ProductsPage 42



In this section, we will discuss the various components that make up a corrugated metal hose assembly, and what information a metal hose fabricator will need in order to make an assembly for your application. If you need assistance determining this information, we have also included an explanation of how to analyze the application and make the appropriate selections.



In order to produce an assembly, the fabricator will need answers to the following five questions.

1. **Hose:** (type, alloy, and size): page 4-18
2. **Fittings:** (type, alloy, and size for each end): pages 19-21
3. **Length of the Assembly:** (either overall length or live length): page 22-24
4. **Fabrication Options:** page 25
5. **Accessories:** page 28

If you have the answers to these questions, a metal hose fabricator will be able to make your custom assembly. If you do not have the answers to all five questions, you will need to obtain them. The next section (S.T.A.M.P.E.D.) is designed to help you obtain the information necessary to determine the answers.

S.T.A.M.P.E.D.

To properly design a metal hose assembly for a particular application, the following design parameters must be determined. To help remember them, they have been arranged to form the acronym "S.T.A.M.P.E.D."

1. **SIZE**
The diameter of the connections to which the assembly will be installed is needed to provide a proper fit. This information is required.
2. **TEMPERATURE**
As the temperature to which the assembly is exposed (internally and externally) increases, the strength of the assembly's components decreases. Also, the coldest temperature to which the hose will be exposed can affect the assembly procedure and/or fitting materials. If you do not provide this information, it will be assumed that the temperatures are 70° F.
3. **APPLICATION**
This refers to the configuration in which the assembly is installed. This includes both the dimensions of the assembly, as well as the details of any movement that the assembly will experience. This information is necessary to determine assembly length and required flexibility.
4. **MEDIA**
Identify all chemicals to which the assembly will be exposed, both internally and externally. This is important since you must be sure the assembly's components are chemically compatible with the media going through the hose, as well as the environment in which the hose is to be installed. If no media is given, it will be assumed that both the media and the external environment are compatible with all of the available materials for each component.
5. **PRESSURE**
Identify the internal pressure to which the assembly will be exposed. Also, determine if the pressure is constant or if there are cycles or spikes. This information is important to determine if the assembly is strong enough for the application. If no pressure is given it will be assumed that the pressure is low and there are no pressure surges or spikes.
6. **END FITTINGS**
Identify the necessary end fittings. This is required since fittings for the assembly must be chosen to properly fit the mating connections.
7. **DYNAMICS**
Identify the velocity at which the media will flow through the assembly. Since corrugated metal hose does not have a smooth interior, rapid media flow can create a resonant frequency that will cause the hose to vibrate and prematurely fail. If no velocity is given, it will be assumed that the velocity is not fast enough to affect the assembly's performance.

When selecting a hose, you must consider three variables: pressure-carrying capability, flexibility, and chemical compatibility.

1. PRESSURE-CARRYING CAPABILITY

The hose must be strong enough to handle the pressures to which it will be exposed. To determine hose pressure capability, consult the catalog for the “Maximum Working Pressure” stated for the hose. The Maximum Working Pressure must be reduced for each of the following circumstances:

- Temperature - As temperature increases, hose working pressure decreases. After you have determined the proper alloy (see “Chemical Compatibility” below) go to the “Derating Factor” table on page 33 in Technical Information and match the alloy of the hose and braid with the highest temperature to which they will be exposed (either internally or externally) to obtain the proper derating factors. Then multiply the hose’s Maximum Working Pressure by the most-limiting temperature derating factor.
- Dynamic Pressure - Pulsating, surge, or shock pressures, like those encountered with quick opening or closing valves, can inflict severe damage on a hose. If your application entails pulsating pressures, the working pressure should be derated by half. If your application entails shock pressures, derate the stated working pressure to 1/6 of its value.

Example:

1” Annuflex hose - T321 stainless steel hose and T304 stainless steel braid @ 500° F with shock pressures.

*Catalog Maximum Working Pressure = 718 psi
Temperature Derating Factor at 500° F. = 0.88; and the
Pressure Derating Factor = 1/6
Maximum Application Working Pressure =
718 psi x 0.88 x 1/6 = 105.31 psi*

2. FLEXIBILITY

Confirm that the hose’s minimum bend radius is less than the bend radius required for the application. Increasing the installed radius of the hose will reduce fatigue on the corrugations, increasing assembly life. Care should also be taken for applications with vibration. Contact Hose Master’s Inside Sales Department if excessive vibration is present. Refer to the Vibration chart on page 35 for additional information.

3. CHEMICAL COMPATIBILITY

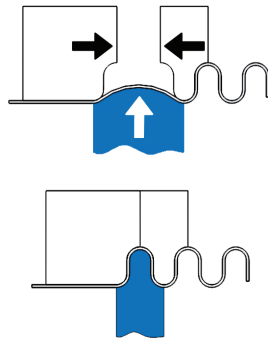
You must choose a material for the hose and braid that is compatible with the media being conveyed through the hose, as well as the environment in which the hose is to be installed. When determining chemical compatibility, it is important to know the temperature and concentration of the chemical(s). Although there are many resources to confirm chemical compatibility, two of the industry standards that you may use are the National Association of Corrosion Engineers (NACE) and the Compass Corrosion Guides. You may also contact Hose Master’s Inside Sales Department, which can check these sources for you.

One of the primary objectives in manufacturing corrugated metal hose is forming corrugations on a steel tube while adding the least amount of residual stress. Through innovative design and in-house, custom-built production equipment, Hose Master has accomplished this with Stress-Lite™ annular corrugating processes (Hydroforming and Crimpforming).

Stress-Lite™ annular hose processes synchronize non-torsional radial forming with simultaneous bi-directional axial tube feed.

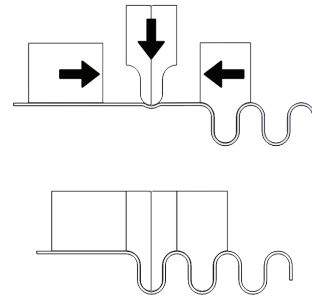
Hydroforming Process:

Hydroforming method grabs a section of tube, expands it without torsion using high pressure water, while simultaneously feeding the tube in axially from both directions.



Crimpforming Process:

Crimpforming method grabs a section of tube, compresses it without torsion using a "shutter-crimp", while simultaneously feeding the tube in axially from both directions.



These processes produce annular hoses with:

- Minimal Work Hardening
- Uniform Wall Thickness
- No Residual Torsional Stress (RTS)

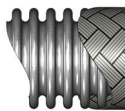


Example of RTS

Resulting in the superior performance of Stress-Lite™ hose:

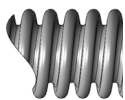
- Greater Flexibility
- Higher Cycle Life

Our engineers at Hose Master have developed Stress-Lite™ processes which represent the state-of-the-art technology in annular hose manufacturing. This, in conjunction with an optimized hose profile, yields the best corrugated metal hose in the industry.



Annular Profile - Independent corrugations, straight and parallel.

The manufacturing process of corrugating annular metal hose starts with a high-quality stainless steel strip that is rolled to form a thin-walled tube with a strong, clean, non-oxidized seam weld. After the tube has been welded, corrugations are formed into the tube to make it flexible.



Helical Profile - One continuous corrugation that spirals around the hose.

Helical seam welded hoses are made from a stainless steel strip that is formed before welding. Because it is not mechanically formed from a tube (contrary to traditional methods), this hose is extremely flexible and does not contain the residual stresses found in traditional mechanically-formed helical hose.



Single-Walled Helical Profile
Formed from a single stainless steel ply



Double-Walled Helical Profile
2-ply of strip for higher pressure ratings

Both single-wall and double-walled helical hoses are made by pre-forming the stainless steel strip, overlapping the material, and continuously resistance-welding the seam together.

FEATURES & BENEFITS

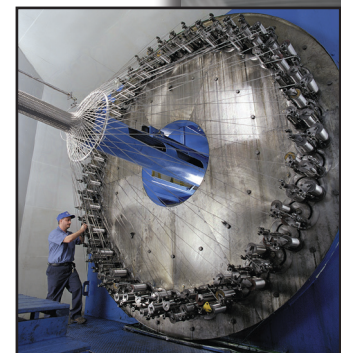
- Feature - Hose Master's proprietary forming methods induce minimal residual stress in the hose wall compared to other methods of manufacturing
Benefit - Increased resistance to stress minimizes hose failures and significantly increases cycle life
- Feature - A characteristic of Hose Master's forming processes is a very uniform metal thickness throughout the corrugation profile. Other forming methods can result in significant variations in metal gauge
Benefit - Uniform wall thickness promotes even distribution of strain during flexing, thereby increasing hose longevity
- Feature - Hose Master's proprietary manufacturing methods incorporate three separate tests of the butt-welded hose seam
Benefit - Ensures highest-quality hose and reduces premature product failure
- Feature - Hose Master's forming processes minimize work hardening of the alloy during the corrugating process
Benefit - Results in a more flexible hose and maintains proper alloy yield strength
- Feature - Highest technology equipment combined with skilled workmanship allow the use of lighter gauge metals.
Benefit - Allows for proper wall thickness, maximizing cycle life and flexibility

BRAIDING PROCESS

To give corrugated hose the ability to withstand pressure, stainless steel wire is braided over the hose. Hoses may be single braided (one layer of braid) or double braided (two layers of braid) to achieve even greater working pressures. Braided braid is used on large-diameter hose.

Designing the proper braid for each type of corrugated hose requires sophisticated engineering to maintain the proper balance between the braid strength and the hose's flexibility. Hose Master's braid packages offer several advantages:

1. High Percentage Braid Coverage - Hose Master flexible hose has the highest percentage of braid coverage, yielding better cycle life and protection against damage to the hose.
2. Machine Braided Hose - Hose Master weaves the braid directly onto the hose, ensuring that the braid fits tightly against the hose, preventing potential hose deformation or squirm. Machine braided hose also offers repeatable performance and longer cycle life.



HOSE PERFORMANCE CHART

HOSE TYPE	Number of Braids	Inside Diameter (in.)																	
		1/4		5/16		3/8		1/2		5/8		3/4		1		1 1/4		1 1/2	
		Working Pressure (psi)	Dynamic Bend Radius (in.)	Working Pressure (psi)	Dynamic Bend Radius (in.)	Working Pressure (psi)	Dynamic Bend Radius (in.)	Working Pressure (psi)	Dynamic Bend Radius (in.)	Working Pressure (psi)	Dynamic Bend Radius (in.)	Working Pressure (psi)	Dynamic Bend Radius (in.)	Working Pressure (psi)	Dynamic Bend Radius (in.)	Working Pressure (psi)	Dynamic Bend Radius (in.)	Working Pressure (psi)	Dynamic Bend Radius (in.)
ANNUFLEX Standard Product T321, T316L, T304L Information for sizes 14"-30" is available on page 9	0	90		n/a	n/a	70		70		57		43		43		43		28	
	1	1800	4.5	n/a	n/a	1558	5.0	1186	5.5	1205	7.0	898	8.0	718	9.0	645	10.0	531	11.0
	2	2700				2336		1779		1808		1347		1077		968		797	
MASTERFLEX Most Flexible T321, T316L, T304L See page 10	0	90		n/a	n/a	70		70		57		43		43		43		28	
	1	1800	3.7	n/a	n/a	1558	4.0	1186	4.4	1205	5.6	898	6.4	718	7.1	645	7.9	531	8.7
	2	2700				2336		1779		1808		1347		1077		968		797	
PRESSUREFLEX HP High Pressure T321 & T316L See page 11	0	450		n/a	n/a	400		400		n/a		220		190		200		90	
	1	3000	5.5	n/a	n/a	3300	8.5	2400	10.0	n/a	n/a	1100	8.0	1000	9.0	900	12.0	750	13.0
	2	4000				n/a		3200				1650		1400		1350		1200	
PRESSUREMAX HP® Ultra-High Pressure T321 & T316L See page 12	0	500		n/a	n/a	400		200		n/a		250	4.5	180	7.0	190	9.5	110	11.5
	1	5000		n/a	n/a	3500		2700		n/a		2650	10.0	2500	11.0	1775	12.5	1450	13.0
	2	6000	4.5	n/a	n/a	5000	7.0	4500	8.0	n/a	n/a	3600	10.0	3000	11.0	2600	12.5	2200	13.0
	3	n/a				n/a		n/a				n/a	n/a	n/a	n/a	3000	14.0	n/a	n/a
	4	n/a				n/a		n/a				n/a	n/a	n/a	n/a	n/a	n/a	n/a	n/a
CHEMKING® Chemical Resistance 276 See page 13	0			n/a	n/a	n/a		70		n/a		43		43		n/a		28	
	1	n/a	n/a	n/a	n/a	n/a	n/a	1186	5.5	n/a	n/a	898	8.0	718	9.0	n/a	n/a	531	11.0
	2							1779				1347		1077				797	
FORMAFLEX Stay-Put Application T321, T316L See page 15	0	90		n/a	n/a	70		70		57		43		43		43		28	
	1	900	n/a	n/a	n/a	800	n/a	665	n/a	500	n/a	380	n/a	355	n/a	280	n/a	264	n/a
	2	n/a				n/a		n/a		n/a		n/a		n/a		n/a		n/a	
BRONZEFLEX Bronze Alloy See page 16	0			n/a	n/a	60		50		n/a		30		26		16		15	
	1	n/a	n/a	n/a	n/a	704	6.0	566	7.0	n/a	n/a	468	8.0	334	10.0	306	12.0	297	13.5
	2					936		753				622		444		407		395	
EXTRAFLEX Helical/Flexible T321 See page 17	0	71		43	2.4	36		28		28		14		11		9		7	
	1	1778	2.2	1422	1991	1138	2.8	910	3.1	910	3.9	711	5.1	569	6.3	455	7.9	356	9.4
	2	2489				1707		1422		1422		1138		910		711		569	
HYDRAFLEX Helical/High-Pressure T316L See page 18	0	n/a		n/a	5.1	n/a		n/a		n/a		n/a		n/a		n/a		n/a	
	1	4600	5.0	4000	4800	3800	5.5	2600	5.7	2400	6.1	2000	6.5	1500	7.9	1100	9.4	1000	12.2
	2	5800				4000		3700		2700		2200		2000		1600		1500	

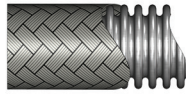
Product specifications are subject to change without notice.

HOSE PERFORMANCE CHART

HOSE TYPE	Number of Braids	Inside Diameter (in.)																			
		2		2 1/2		3		4		5		6		8		10		12		14 - 30	
		Working Pressure (psi)	Dynamic Bend Radius (in.)	Working Pressure (psi)	Dynamic Bend Radius (in.)	Working Pressure (psi)	Dynamic Bend Radius (in.)	Working Pressure (psi)	Dynamic Bend Radius (in.)	Working Pressure (psi)	Dynamic Bend Radius (in.)	Working Pressure (psi)	Dynamic Bend Radius (in.)	Working Pressure (psi)	Dynamic Bend Radius (in.)	Working Pressure (psi)	Dynamic Bend Radius (in.)	Working Pressure (psi)	Dynamic Bend Radius (in.)	Working Pressure (psi)	Dynamic Bend Radius (in.)
ANNUFLEX Standard Product T321, T316L, T304L See page 9	0 1 2	14 449 674	13.0	14 417 626	16.0	14 346 519	18.0	14 299 448	22.0	14 275 412	28.0	11 210 315	32.0	3 250 360	29.0	4 175 310	34.0	3 185 325	44.0	Information available on page 9	
MASTERFLEX Most Flexible T321, T316L, T304L See page 10	0 1 2	14 449 674	10.3	14 417 626	12.8	14 346 519	14.5	14 299 448	17.4	14 275 412	21.9	11 210 315	25.0	n/a	n/a	n/a	n/a	n/a	n/a	n/a	n/a
PRESSUREFLEX HP High Pressure T321 & T316L See page 11	0 1 2	105 800 1150	15.0	46 575 900	17.0	36 550 800	20.0	23 425 575	25.0	28 331 n/a	34.0	23 285 n/a	40.0	n/a	n/a	n/a	n/a	n/a	n/a	n/a	
PRESSUREMAX HP® Ultra-High Pressure T321 & T316L See page 12	0 1 2 3 4	100 1100 1675 n/a n/a	12.0 14.0 14.0 n/a n/a	46 700 1050 n/a n/a	14.5 16.0 16.0 n/a n/a	36 600 900 1200 n/a	16.0 20.0 20.0 75.0 n/a	23 525 875 1200 n/a	19.0 26.0 26.0 n/a 96.0	n/a	n/a	n/a	n/a	n/a	n/a	n/a	n/a	n/a	n/a	n/a	
CHEMKING® Chemical Resistance 276 See page 13	0 1 2	14 449 674	13.0	n/a	n/a	14 346 519	18.0	14 299 448	22.0	14 275 412	28.0	11 210 315	32.0	n/a	n/a	n/a	n/a	n/a	n/a	n/a	
FORMAFLEX Stay-Put Application T321, T316L See page 15	0 1 2	14 221 n/a	n/a	n/a	n/a	n/a	n/a	n/a	n/a	n/a	n/a	n/a	n/a	n/a	n/a	n/a	n/a	n/a	n/a	n/a	
BRONZEFLEX Bronze Alloy See page 16	0 1 2	10 210 279	17.0	8 194 258	22.0	5 166 221	24.0	n/a	n/a	n/a	n/a	n/a	n/a	n/a	n/a	n/a	n/a	n/a	n/a	n/a	
EXTRAFLEX Helical/Flexible T321 See page 17	0 1 2	6 284 455	11.0	n/a	n/a	n/a	n/a	n/a	n/a	n/a	n/a	n/a	n/a	n/a	n/a	n/a	n/a	n/a	n/a	n/a	
HYDRAFLEX Helical/High-Pressure T316L See page 18	0 1 2	n/a 750 1100	14.6	n/a	n/a	n/a	n/a	n/a	n/a	n/a	n/a	n/a	n/a	n/a	n/a	n/a	n/a	n/a	n/a	n/a	

Product specifications are subject to change without notice.

ANNUFLEX is the foundation of Hose Master's extensive line of annular products. Proprietary manufacturing processes produce a hose with minimal residual stress, uniform wall thickness throughout the corrugations, and minimal work hardening. These processes create a very flexible, long-lasting corrugated metal hose.



Explanation of Annuflex Part Numbers
 AF _____ 7 _____
 Material Code Braid Code

Material Codes
 4 - T321 Stainless Steel
 5 - T316L Stainless Steel
 7 - T304L Stainless Steel

Braid Codes
 00 - Unbraided
 50 - T304 Single Braid
 55 - T304 Double Braid
 T316 Braid available upon request

Example: AF4750 = T321 stainless steel, annular corrugated metal hose with a single T304 stainless steel braid

Inside Diameter (in.)	Number of Braids (#)	Outside Diameter (in.)	Static Minimum Bend Radius (in.)	Dynamic Minimum Bend Radius (in.)	Maximum Working Pressure (psi)	Burst Pressure (psi)	Weight Per Foot (lbs.)
1/4	0	0.41	1.0	4.5	90	n/a	0.04
	1	0.47			1800	7233	0.11
	2	0.53			2700	9100	0.18
3/8	0	0.55	1.2	5.0	70	n/a	0.06
	1	0.61			1558	6230	0.16
	2	0.67			2336	9345	0.25
1/2	0	0.77	1.5	5.5	70	n/a	0.11
	1	0.83			1186	4743	0.22
	2	0.89			1779	7115	0.33
5/8	0	0.96	1.8	7.0	57	n/a	0.17
	1	1.02			1205	4820	0.33
	2	1.08			1808	7230	0.49
3/4	0	1.08	2.1	8.0	43	n/a	0.18
	1	1.14			898	3591	0.35
	2	1.20			1347	5387	0.53
1	0	1.32	2.7	9.0	43	n/a	0.23
	1	1.39			718	2872	0.47
	2	1.45			1077	4308	0.71
1 1/4	0	1.75	3.1	10.0	43	n/a	0.29
	1	1.83			645	2581	0.61
	2	1.91			968	3872	0.93
1 1/2	0	2.08	3.9	11.0	28	n/a	0.47
	1	2.16			531	2125	0.85
	2	2.24			797	3188	1.23
2	0	2.61	5.1	13.0	14	n/a	0.59
	1	2.69			449	1797	1.11
	2	2.77			674	2696	1.63
2 1/2	0	3.40	6.8	16.0	14	n/a	0.84
	1	3.50			417	1669	1.64
	2	3.60			626	2504	2.44
3	0	3.88	7.8	18.0	14	n/a	1.18
	1	3.98			346	1384	2.06
	2	4.08			519	2076	2.94
4	0	4.96	9.8	22.0	14	n/a	1.41
	1	5.06			299	1194	2.69
	2	5.16			448	1791	3.97
5	0	6.00	12.8	28.0	14	n/a	2.18
	1	6.12			275	1099	3.61
	2	6.24			412	1649	5.04
6	0	7.01	14.8	32.0	11	n/a	2.69
	1	7.13			210	839	4.44
	2	7.25			315	1259	6.19
8*	0	9.04	18.0	29.0	3	n/a	4.88
	1	9.32			250	1000	8.21
	2	9.60			360	1446	11.53
10*	0	11.34	21.0	34.0	4	n/a	7.42
	1	11.56			175	700	11.05
	2	11.78			310	1247	14.67
12*	0	13.45	27.0	44.0	3	n/a	11.04
	1	13.73			185	745	16.71
	2	14.00			325	1308	22.38
14*	0	14.50	31	68.5	3	n/a	10.1
	1	14.78			122	488	17.37
	2	15.05			245	980	24.64
16*	0	16.50	36	70.9	2.8	n/a	11.65
	1	16.78			97	388	18.63
	2	17.05			193	772	25.62
18*	0	19.00	42	71.7	2.7	n/a	16.66
	1	19.31			94	376	25.26
	2	19.62			188	752	33.85
20*	0	21.00	46	74.8	2.5	n/a	19.28
	1	21.31			75	300	28.05
	2	21.62			150	600	36.81
24*	0	25.00	55	85.8	2.3	n/a	23.17
	1	25.31			59	236	32.59
	2	25.62			118	472	40.09
30*	0	31.00	67	108.9	2.2	n/a	26.19
	1	31.31			43	172	34.95
	2	31.62			87	348	43.71

* 8" - 30" diameter AF4750 is supplied with braided braid

The minimum bend radius is measured from the centerline of the hose • The working pressure decreases with temperature • For rapid pressure fluctuations, consult factory

MASTERFLEX is manufactured using the same high quality process used to make Annuflex hose, but the number of corrugations per foot is increased to provide for greater flexibility.



Explanation of Masterflex Part Numbers

AF _____ 5 _____

Material Code Braid Code

Material Codes

4 - T321 Stainless Steel
5 - T316L Stainless Steel
7 - T304L Stainless Steel

Braid Codes

00 - Unbraided
50 - T304 Single Braid
55 - T304 Double Braid
T316 Braid available upon request

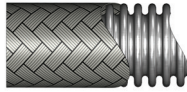
Example: AF4550 = T321 stainless steel, annular corrugated metal hose with a single T304 stainless steel braid

Inside Diameter (in.)	Number of Braids (#)	Outside Diameter (in.)	Static Minimum Bend Radius (in.)	Dynamic Minimum Bend Radius (in.)	Maximum Working Pressure (psi)	Burst Pressure (psi)	Weight Per Foot (lbs.)
1/4	0	0.42	0.9	3.7	90	n/a	0.07
	1	0.48			1800	7233	0.14
	2	0.54			2700	9100	0.20
3/8	0	0.55	1.0	4.0	70	n/a	0.07
	1	0.61			1558	6230	0.17
	2	0.67			2336	9345	0.27
1/2	0	0.77	1.2	4.4	70	n/a	0.18
	1	0.83			1186	4743	0.32
	2	0.89			1779	7115	0.47
5/8	0	0.96	1.4	5.6	57	n/a	0.19
	1	1.02			1205	4820	0.37
	2	1.08			1808	7230	0.54
3/4	0	1.08	1.7	6.4	43	n/a	0.23
	1	1.14			898	3591	0.40
	2	1.20			1347	5387	0.58
1	0	1.33	2.1	7.1	43	n/a	0.30
	1	1.40			718	2872	0.53
	2	1.46			1077	4308	0.78
1 1/4	0	1.75	2.5	7.9	43	n/a	0.63
	1	1.83			645	2581	1.00
	2	1.91			968	3872	1.37
1 1/2	0	2.08	3.1	8.7	28	n/a	0.70
	1	2.16			531	2125	1.16
	2	2.24			797	3188	1.63
2	0	2.61	4.0	10.3	14	n/a	0.88
	1	2.69			449	1797	1.44
	2	2.77			674	2696	1.99
2 1/2	0	3.40	5.4	12.8	14	n/a	1.36
	1	3.50			417	1669	2.16
	2	3.60			626	2504	2.96
3	0	3.88	6.3	14.5	14	n/a	1.63
	1	3.98			346	1384	2.50
	2	4.08			519	2076	3.37
4	0	4.96	7.7	17.4	14	n/a	2.53
	1	5.06			299	1194	3.90
	2	5.16			448	1791	5.29
5	0	6.00	10.0	21.9	14	n/a	4.07
	1	6.12			275	1099	5.53
	2	6.24			412	1649	6.99
6	0	7.01	11.6	25.0	11	n/a	4.46
	1	7.13			210	839	6.34
	2	7.25			315	1259	8.22

- The minimum bend radius is measured from the centerline of the hose
- The working pressure decreases with temperature - obtain derating factor on page 33 in Technical Information
- For rapid pressure fluctuations, consult factory

PRESSUREFLEX HP

PRESSUREFLEX HP® is Hose Master's high-pressure, annular corrugated metal hose. Pressureflex HP® is made from heavy-wall stainless steel, and offers flexibility and dependability when higher pressures are a factor.



Explanation of **Pressureflex HP®** Part Numbers **Material Codes**

AF _____ 7 _____ HP
 Material Code Braid Code

8 - T321 Stainless Steel
 9 - T316L Stainless Steel

Braid Codes

00 - Unbraided
 50 - T304 Single Braid
 55 - T304 Double Braid
 60 - T316 Single Braid
 66 - T316 Double Braid
 70 - T321 Single Braid
 77 - T321 Double Braid

Example: AF8750 = T321 stainless steel, annular corrugated metal hose with a single T304 stainless steel braid

Inside Diameter (in.)	Number of Braids (#)	Outside Diameter (in.)	Static Minimum Bend Radius (in.)	Dynamic Minimum Bend Radius (in.)	Maximum Working Pressure (psi)	Burst Pressure (psi)	Weight Per Foot (lbs.)
1/4	0	0.423	1.0	5.5	450	n/a	0.08
	1	0.483			3000	12000	0.15
	2	0.543			4000	16000	0.22
3/8	0	0.655	1.5	8.5	400	n/a	0.12
	1	0.735			2400	9600	0.31
	2	0.815			3300	14000	0.48
1/2	0	0.774	2.5	10.0	400	n/a	0.24
	1	0.854			2400	9600	0.40
	2	0.934			3200	12800	0.57
3/4	0	1.13	4.0	8.0	220	n/a	0.41
	1	1.19			1100	4430	0.58
	2	1.25			1650	6696	0.76
1	0	1.43	5.0	9.0	190	n/a	0.52
	1	1.49			1000	4187	0.76
	2	1.55			1400	5837	0.99
1 1/4	0	1.74	6.5	12.0	200	n/a	0.76
	1	1.82			900	3758	1.13
	2	1.90			1350	5494	1.50
1 1/2	0	2.10	7.5	13.0	90	n/a	1.13
	1	2.18			750	3070	1.54
	2	2.26			1200	4842	1.96
2	0	2.55	9.0	15.0	105	n/a	1.10
	1	2.68			800	3304	2.29
	2	2.80			1150	4738	3.47
2 1/2	0	3.35	10.5	17.0	46	n/a	1.75
	1	3.48			575	2461	3.05
	2	3.60			900	3857	4.35
3	0	3.67	12.0	20.0	36	n/a	1.92
	1	3.79			550	2252	3.18
	2	3.92			800	3254	4.46
4	0	4.92	9.8	25.0	23	n/a	2.29
	1	5.04			425	1754	4.12
	2	5.16			575	2350	5.98
5*	0	5.96	12.8	34.0	28	n/a	3.03
	1	6.13			331	1324	5.14
6*	0	6.97	14.8	40.0	23	n/a	3.74
	1	7.22			285	1140	6.44

- Some hose material and braid code combinations may be unavailable. Contact Hose Master Customer Service at 800-221-2319 for available combinations of hose material and braid alloys by hose size
- The minimum bend radius is measured from the centerline of the hose
- The working pressure decreases with temperature - obtain derating factor on page 33 in Technical Information
- For rapid pressure fluctuations, consult factory
- * 5 inch and 6 inch diameters are supplied with braided braid

PRESSUREMAX HP® is Hose Master's annular, heavy-wall corrugated metal hose, specifically designed for ULTRA high-pressure applications. PressureMax HP® offers superior flexibility and is made from heavy-wall T321 or T316L stainless steel.



Explanation of PressureMax HP® Part Numbers
 AF _____ 5 _____ HP
 Material Code Braid Code

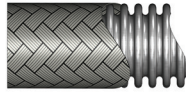
Material Codes Braid Codes
 8 - T321 Stainless Steel 00 - Unbraided
 9 - T316L Stainless Steel 70 - T321 Single Braid
 77 - T321 Double Braid
 7T - T321 Triple Braid
 7Q - T321 Quad Braid

Example: AF8570 = T321 stainless steel, annular corrugated metal hose with a single T321 stainless steel braid

Inside Diameter (in.)	Number of Braids (#)	Outside Diameter (in.)	Static Minimum Bend Radius (in.)	Dynamic Minimum Bend Radius (in.)	Maximum Working Pressure (psi)	Burst Pressure (psi)	Weight Per Foot (lbs.)
1/4	0	0.431	0.5		500	n/a	0.15
	1	0.556	1.5	4.5	5000	20000	0.32
	2	0.681	1.5		6000	24000	0.49
3/8	0	0.670	1.5		400	n/a	0.18
	1	0.795	2.5	7.0	3500	14000	0.46
	2	0.920	2.5		5000	20000	0.77
1/2	0	0.784	2.0		200	n/a	0.43
	1	0.884	3.0	8.0	2700	10800	0.64
	2	0.984	3.0		4500	18000	0.85
3/4	0	1.15	2.5	4.5	250	n/a	0.63
	1	1.28	4.0	10.0	2650	10669	1.09
	2	1.40	4.0	10.0	3600	14521	1.58
1	0	1.45	3.25	7.0	180	n/a	0.84
	1	1.57	5.0	11.0	2500	10000	1.53
	2	1.70	5.0	11.0	3000	12083	2.25
1 1/4	0	1.75	5.0	9.5	190	n/a	1.32
	1	1.88	6.5	12.5	1775	7119	2.09
	2	2.00	6.5	12.5	2600	10400	2.88
	3	2.13	7.0	14.0	3000	12082	3.71
1 1/2	0	2.11	6.0	11.5	110	n/a	1.75
	1	2.23	7.5	13.0	1450	5800	2.64
	2	2.36	7.5	13.0	2200	8892	3.57
2	0	2.57	7.5	12.0	100	n/a	2.04
	1	2.70	9.0	14.0	1100	4415	3.23
	2	2.82	9.0	14.0	1675	6710	4.45
2 1/2	0	3.38	8.0	14.5	46	n/a	2.73
	1	3.51	9.5	16.0	700	2800	4.29
	2	3.63	9.5	16.0	1050	4200	5.59
3	0	3.70	8.5	16.0	36	n/a	3.13
	1	3.83	10.5	20.0	600	2400	4.39
	2	3.95	10.5	20.0	900	3600	5.67
	3	4.08	23.0	75.0	1200	4800	6.99
4	0	4.82	10.0	19.0	23	n/a	5.11
	1	4.94	13.0	26.0	525	2100	6.94
	2	5.07	13.0	26.0	875	3500	8.80
	4	5.32	32.0	96.0	1200	4800	12.62

- Some hose material and braid code combinations may be unavailable. Contact Hose Master Customer Service at 800-221-2319 for available combinations of hose material and braid alloys by hose size
- The minimum bend radius is measured from the centerline of the hose
- The working pressure decreases with temperature - obtain derating factor on page 33 in Technical Information
- For rapid pressure fluctuations, consult factory

CHEMKING® is Hose Master's chemical-resistant, annular corrugated metal hose. Manufactured with a special 276 alloy, ChemKing® offers excellent flexibility and corrosion resistance for many of the most severe applications found in chemical processing.



Explanation of ChemKing® Part Numbers
 AF 67 _____
 Braid Code

Braid Codes

- 00 - Unbraided
- 60 - T316 Single Braid
- 66 - T316 Double Braid
- 20 - C276 Single Braid
- 22 - C276 Double Braid

Example: AF6760 = 276 annular corrugated metal hose with a single T316 stainless steel braid

Inside Diameter (in.)	Number of Braids (#)	Outside Diameter (in.)	Static Minimum Bend Radius (in.)	Dynamic Minimum Bend Radius (in.)	Maximum Working Pressure (psi)	Burst Pressure (psi)	Weight Per Foot (lbs.)
1/2	0	0.77	1.5	5.5	70	n/a	0.11
	1	0.83			1186	4743	0.22
	2	0.89			1779	7115	0.33
3/4	0	1.16	2.1	8.0	43	n/a	0.19
	1	1.22			898	3591	0.37
	2	1.28			1347	5387	0.55
1	0	1.47	2.7	9.0	43	n/a	0.26
	1	1.53			718	2872	0.50
	2	1.59			1077	4308	0.74
1 1/2	0	2.08	3.9	11.0	28	n/a	0.47
	1	2.16			531	2125	0.85
	2	2.24			797	3188	1.23
2	0	2.61	5.1	13.0	14	n/a	0.59
	1	2.69			449	1797	1.11
	2	2.77			674	2696	1.63
3	0	3.88	7.8	18.0	14	n/a	1.18
	1	3.98			346	1384	2.06
	2	4.08			519	2076	2.94
4*	0	4.96	9.8	22.0	14	n/a	1.41
	1	5.06			299	1194	2.47
	2	5.16			448	1791	3.53
5*	0	6.00	12.8	28.0	14	n/a	2.18
	1	6.12			275	1099	3.61
	2	6.24			412	1646	5.04
6*	0	7.01	14.8	32.0	11	n/a	2.69
	1	7.13			210	839	4.44
	2	7.25			315	1259	6.19

* For 4 inch, 5 inch, and 6 inch diameters, consult factory for delivery

- The minimum bend radius is measured from the centerline of the hose
- The working pressure decreases with temperature - obtain derating factor on page 33 in Technical Information
- For rapid pressure fluctuations, consult factory
- Braid is T316 stainless steel or C276 alloy. Monel™ braid is available upon request. When Monel™ braid is used, stated pressure ratings need to be reduced by 0.75. Part numbers for Monel™ braid are AF6780 (single braid) and AF6788 (double braid)

CHLORSAFE™ is Hose Master's 276 alloy, corrugated chlorine-transfer assemblies, designed specifically to meet the demands of this application. With considerations made for both wet and dry chlorine, these assemblies are the safest available. Hose Master's ChlorSafe™ assemblies are manufactured in compliance with the Chlorine Institute Pamphlet 6, Appendix A, latest edition.



Explanation of ChlorSafe™ Part Numbers

AF 67 _____
Braid Code

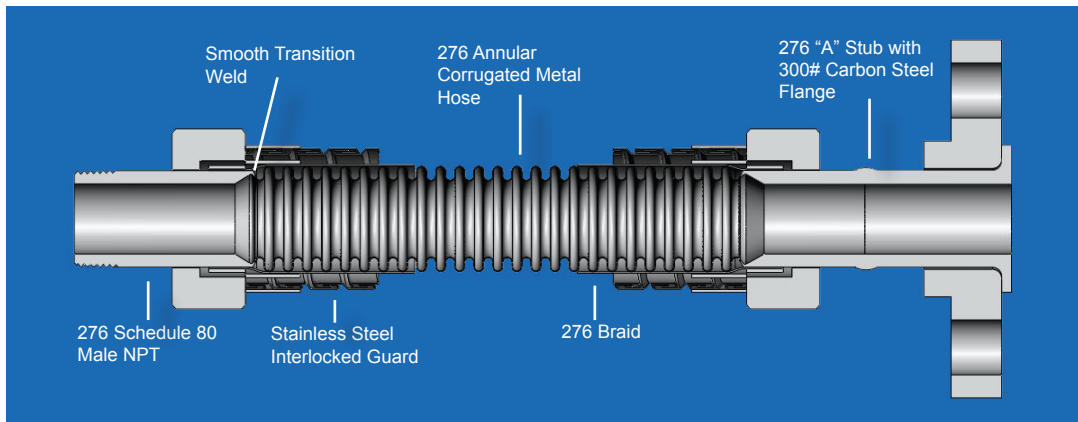
Braid Codes

20 - C276 Single Braid
22 - C276 Double Braid

Example: AF6720 = C276 annular corrugated metal hose with a single C276 braid

Inside Diameter (in.)	Number of Braids (#)	Outside Diameter (in.)	Dynamic Minimum Bend Radius (in.)	Maximum Working Pressure (psi)	Burst Pressure (psi)
1/2	1	0.83	8.0	500	2500
	2	0.89			
3/4	1	1.22	9.0	375	1875
	2	1.28			
1	1	1.53	10.0	375	1875
	2	1.59			
1 1/2	1	2.16	11.0	375	1875
	2	2.24			
2	1	2.69	13.0	375	1875
	2	2.77			

- The minimum bend radius is measured from the center-line of the hose
- Per Chlorine Institute specifications, pressure ratings represent a 5:1 safety factor
- For pressures in excess of Chlorine Institute standards, please consult the factory



ChlorSafe™ Features:

- Hose Master's proprietary manufacturing processes reduce residual stress and produce the most flexible chlorine-transfer hose available
- ChlorSafe's™ all-metal construction makes it fire-resistant
- Proprietary welding techniques provide a smooth transition from hose to fitting with no gaps or crevices to entrap contaminants
- All welds are argon-purged to eliminate oxidation

ChlorSafe™ Specifications:

- All wetted surfaces and the braid are made from UNS N10276 (referred to as either C276 or 276 alloy) which has the highest chemical resistance rating for both dry and wet chlorine¹
- Every assembly is helium mass spectrometer leak tested to at least 5.0 x 10⁻⁶ std cc/sec
- Each assembly is covered by a stainless steel interlocked metal hose for maximum durability
- All assemblies are strength-tested to twice maximum allowable working pressure

¹ Kenneth M. Pruett, *Chemical Resistance Guide for Metals and Alloys: A Guide to Chemical Resistance of Metals Alloys* (Derby: Compass Publications, 1995), 93.

FORMAFLEX is Hose Master's "stay-put," annular corrugated metal hose. Formaflex is designed to bend and stay in one position, providing a stress-free connection between piping systems.



Explanation of Formaflex Part Numbers
 AF _____ 9 _____
 Material Code Braid Code

Material Codes

4 - T321 Stainless Steel
 5 - T316L Stainless Steel

Braid Codes

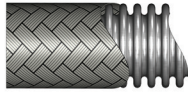
00 - Unbraided
 50 - T304 Single Braid

Example: AF4950 = T321 stainless steel, annular corrugated metal hose with a single T304 stainless steel braid

Inside Diameter (in.)	Number of Braids (#)	Outside Diameter (in.)	Static Minimum Bend Radius (in.)	Dynamic Minimum Bend Radius (in.)	Maximum Working Pressure (psi)	Burst Pressure (psi)	Weight Per Foot (lbs.)
1/4	0	0.41	1.0	n/a	90	n/a	0.04
	1	0.47			900	3600	0.11
3/8	0	0.65	1.2	n/a	70	n/a	0.10
	1	0.71			800	3200	0.17
1/2	0	0.77	1.5	n/a	70	n/a	0.11
	1	0.83			665	2660	0.19
5/8	0	0.96	1.8	n/a	57	n/a	0.17
	1	1.02			500	2000	0.26
3/4	0	1.16	2.1	n/a	43	n/a	0.19
	1	1.22			380	1520	0.29
1	0	1.47	2.7	n/a	43	n/a	0.26
	1	1.53			355	1420	0.42
1 1/4	0	1.75	3.1	n/a	43	n/a	0.29
	1	1.81			280	1120	0.47
1 1/2	0	2.08	3.9	n/a	28	n/a	0.47
	1	2.14			264	1056	0.71
2	0	2.61	5.1	n/a	14	n/a	0.59
	1	2.69			221	884	0.90

- The minimum bend radius is measured from the centerline of the hose
- The working pressure decreases with temperature - obtain derating factor on page 33 in Technical Information
- For rapid pressure fluctuations, consult factory

BRONZEFLEX is Hose Master's heavy-duty corrugated hose, designed for use in those applications that specifically require a bronze hose.



Explanation of **Bronzeflex** Part Numbers

BF 11 _____
 Braid Code

Braid Codes

- 00 - Unbraided
- 10 - Single Bronze Braid
- 11 - Double Bronze Braid

Example: AF1110 = Bronze corrugated metal hose with a single bronze braid

Inside Diameter (in.)	Number of Braids (#)	Outside Diameter (in.)	Static Minimum Bend Radius (in.)	Dynamic Minimum Bend Radius (in.)	Maximum Working Pressure (psi)	Burst Pressure (psi)	Weight Per Foot (lbs.)
3/8	0	0.61	2.0	6.0	60	n/a	0.16
	1	0.67			704	2815	0.29
	2	0.73			936	3744	0.42
1/2	0	0.76	2.3	7.0	50	n/a	0.23
	1	0.81			566	2265	0.38
	2	0.87			753	3012	0.53
3/4	0	1.05	2.5	8.0	30	n/a	0.33
	1	1.10			468	1870	0.55
	2	1.16			622	2487	0.77
1	0	1.34	3.0	9.0	26	n/a	0.41
	1	1.42			334	1335	0.68
	2	1.50			444	1776	0.95
1 1/4	0	1.66	3.5	10.0	16	n/a	0.71
	1	1.74			306	1225	1.15
	2	1.82			407	1629	1.59
1 1/2	0	1.89	4.0	10.0	15	n/a	0.93
	1	1.96			297	1187	1.47
	2	2.03			395	1579	2.01
2	0	2.48	6.0	11.0	10	n/a	1.00
	1	2.57			210	840	1.62
	2	2.66			279	1117	2.24
2 1/2	0	3.33	8.5	16.0	8	n/a	1.70
	1	3.45			194	775	2.68
	2	3.57			258	1031	3.66
3	0	3.89	10.0	20.0	5	n/a	2.10
	1	4.01			166	665	3.30
	2	4.13			221	884	4.50

- The minimum bend radius is measured from the centerline of the hose
- The working pressure decreases with temperature - obtain derating factor on page 33 in Technical Information
- For rapid pressure fluctuations, consult factory

EXTRAFLEX is Hose Master's T321 helical seam welded corrugated metal hose, specifically designed to maximize flexibility while maintaining good pressure ratings. The helical design facilitates draining and reduces in-line turbulence.



Explanation of **Extraflex** Part Numbers
 EF 90 _____
 Braid Code

Braid Codes
 00 - Unbraided
 50 - T304 Single Braid
 55 - Double Braid
 T316 Braid available upon request

Example: EF9050 = T321 stainless steel, helical corrugated metal hose with a single T304 stainless steel braid

Inside Diameter (in.)	Number of Braids (#)	Outside Diameter (in.)	Static Minimum Bend Radius (in.)	Dynamic Minimum Bend Radius (in.)	Maximum Working Pressure (psi)	Burst Pressure (psi)	Weight Per Foot (lbs.)
1/4	0	0.39	0.4	2.2	71	n/a	0.09
	1	0.45			1778	7112	0.13
	2	0.51			2489	9956	0.19
5/16	0	0.47	0.6	2.4	43	n/a	0.10
	1	0.53			1422	5688	0.18
	2	0.59			1991	7964	0.26
3/8	0	0.55	0.6	2.8	36	n/a	0.11
	1	0.61			1138	4552	0.19
	2	0.67			1707	6828	0.28
1/2	0	0.67	0.8	3.1	28	n/a	0.14
	1	0.73			910	3640	0.26
	2	0.79			1422	5688	0.39
5/8	0	0.85	1.2	3.9	28	n/a	0.19
	1	0.91			910	3640	0.32
	2	0.96			1422	5688	0.46
3/4	0	1.02	1.4	5.1	14	n/a	0.22
	1	1.08			711	2844	0.38
	2	1.18			1138	4552	0.55
1	0	1.22	1.8	6.3	11	n/a	0.24
	1	1.28			569	2276	0.54
	2	1.34			910	3640	0.83
1 1/4	0	1.57	2.4	7.9	9	n/a	0.45
	1	1.65			455	1820	0.76
	2	1.73			711	2844	1.09
1 1/2	0	1.89	3.0	9.4	7	n/a	0.65
	1	1.97			356	1424	1.02
	2	2.05			569	2276	1.40
2	0	2.36	3.5	11.0	6	n/a	0.71
	1	2.44			284	1136	1.22
	2	2.52			455	1820	1.75

- The minimum bend radius is measured from the centerline of the hose
- The working pressure decreases with temperature - obtain derating factor on page 33 in Technical Information
- For rapid pressure fluctuations, consult factory

HYDRAFLEX is Hose Master's T316, double-walled, helical seam welded corrugated metal hose. Specially designed to maintain extreme pressure and flexibility, Hydrflex is self-draining and generates minimal in-line turbulence.



Explanation of **Hydrflex** Part Numbers

HF 34 _____
Braid Code

Braid Codes

50 - T304 Single Braid
55 - Double Braid
T316 Braid available upon request

Example: HF3450 = T316 helical corrugated metal hose with a single T304 stainless steel braid

Inside Diameter (in.)	Number of Braids (#)	Outside Diameter (in.)	Static Minimum Bend Radius (in.)	Dynamic Minimum Bend Radius (in.)	Maximum Working Pressure (psi)	Burst Pressure (psi)	Weight Per Foot (lbs.)
1/4	1	0.52	1.1	5.0	4600	18400	0.21
	2	0.62			5800	23200	0.32
5/16	1	0.62	1.2	5.1	4000	16000	0.29
	2	0.74			4800	19200	0.45
3/8	1	0.70	1.4	5.5	3800	15200	0.36
	2	0.82			4000	16000	0.57
1/2	1	0.82	1.6	5.7	2600	10400	0.43
	2	0.94			3700	14800	0.69
5/8	1	0.97	2.2	6.1	2400	9600	0.51
	2	1.09			2700	10800	0.82
3/4	1	1.19	2.8	6.5	2000	8000	0.64
	2	1.31			2200	8800	1.03
1	1	1.39	3.5	7.9	1500	6000	0.78
	2	1.51			2000	8000	1.25
1 1/4	1	1.75	4.1	9.4	1100	4400	1.15
	2	1.87			1600	6400	1.70
1 1/2	1	2.07	5.1	12.2	1000	4000	1.45
	2	2.19			1500	6000	2.16

- The minimum bend radius is measured from the centerline of the hose
- The working pressure decreases with temperature - obtain derating factor on page 33 in Technical Information
- For rapid pressure fluctuations, consult factory

Metal hose is more versatile than other hose in that virtually any fitting can be attached to metal hose. Other types of hose require special shanks and collars in order to attach fittings. For metal hose, any fitting made from a weldable material can be attached without needing special features. This versatility also means that multiple fittings can be welded together to make custom solutions for difficult applications.

Selecting the proper fittings for an application is largely determined by the mating fittings to which the hose assembly will be attached. Once the mating fittings have been identified, the hose fittings should complement the mating fittings in type, size, and alloy. Even though the selection of the hose fittings is determined by the mating fittings, it is a good idea to confirm that the fittings used in the application are appropriate for the application. Ensure that the fittings are chemically compatible and are able to withstand the pressure and temperatures of both the media and the surrounding environment.



Male Pipe Nipple

Alloys	T304 & T316 Stainless Steel, Carbon Steel, 276
Size Range	1/8" - 12"
Schedules	40, 80



Hex Male

Alloys	T304 & T316 Stainless Steel, Carbon Steel, Brass
Size Range	1/4" - 4"
Schedules	n/a



Grooved-End Fitting

Alloys	T304 & T316 Stainless Steel, Carbon Steel
Size Range	1" - 12"
Schedules	40



LiveLink® Swivel Fitting

Alloys	T304 Stainless Steel
Size Range	1/4" - 2"
Schedules	Consult factory for pressure rating



Female Union (Threaded/Socket Weld)

Alloys	T304 & T316 Stainless Steel, Carbon Steel, Malleable Iron, Brass
Size Range	1/4" - 4"
Class	125#, 150#, 300, 3000# (depending on alloy)



Female Half Coupling (Threaded/Socket Weld)

Alloys	T304 & T316 Stainless Steel, Carbon Steel
Size Range	1/4" - 4"
Class	150#, 3000#



1, 2, or 3 Piece SAE (JIC)

Alloys	T316 Stainless Steel, Carbon Steel, Brass (nut only)
Size Range	1/4" - 2"
Schedules	n/a



45° & 90° SAE (JIC)

Alloys	Stainless Steel, Carbon Steel
Size Range	1/2" - 2"
Schedules	n/a



Sanitary Flange

Alloys	T304 & T316 Stainless Steel
Size Range	1" - 3"
Schedules	n/a



Slip-On Flange

Alloys	T304 & T316 Stainless Steel, Carbon Steel
Size Range	1/2" - 12"
Class	150#, 300#



Plate Flange

Alloys	T304 & T316 Stainless Steel, Carbon Steel
Size Range	1/2" - 12"
Class	150#



Weld Neck Flange

Alloys	T304 & T316 Stainless Steel, Carbon Steel
Size Range	1/2" - 6"
Class	150#, 300#



TTMA Flange

Alloys	T316 Stainless Steel, Carbon Steel
Size Range	2" - 6"
Schedules	n/a



C-Stub with Floating Flange

Alloys	T304 & T316 Stainless Steel
Size Range	1/2" - 10"
Schedules	10



A-Stub with Lap Joint Flange

Alloys	T304 & T316 Stainless Steel, Carbon Steel, 276
Size Range	1/2" - 8"
Schedules	10, 40



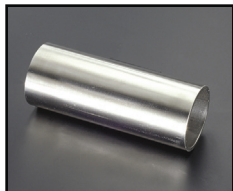
TTMA C-Stub Swivel

Alloys	T304 & T316 Stainless Steel
Size Range	4" - 6"
Schedules	10



Part A & Part D (Cam-Lock)

Alloys	T316 Stainless Steel, Brass, Aluminum
Size Range	1/2" - 8"
Schedules	n/a



Tube End

Alloys	T304, T316 & T321 Stainless Steel, Carbon Steel
Size Range	1/8" - 12" (seamless or welded)
Schedules	Various



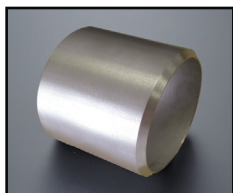
Short & Long Radius Elbows (45° & 90°)

Alloys	T304 & T316 Stainless Steel, Carbon Steel, 276
Size Range	1/4" - 12"
Schedules	Various



Reducer

Alloys	T304 & T316 Stainless Steel, Carbon Steel
Size Range	3/4" - 12"
Schedules	10, 40 (carbon steel)



Beveled Pipe End

Alloys	T304 & T316 Stainless Steel, Carbon Steel, 276
Size Range	1/8" - 12"
Schedules	Various



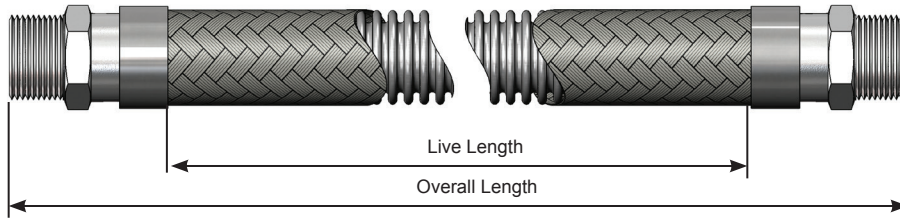
Ground Joint Female

Alloys	Carbon Steel
Size Range	1/2" - 4"
Schedules	n/a



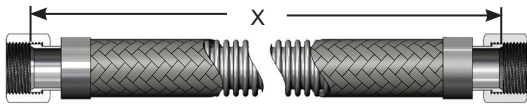
Specialty Gas Nuts

Alloys	Brass
Size Range	A, B, C, & D
Schedules	SAE & BSP

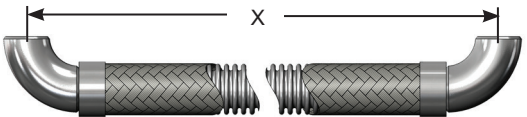


To calculate the proper length of a hose assembly, you need to:

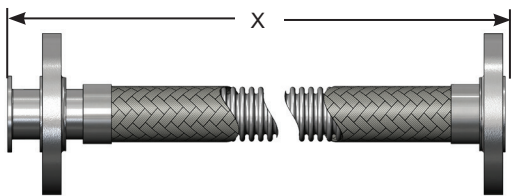
1. **Verify that the installation is properly designed** (refer to Do's & Don'ts on page 36 in Technical Section)
 - Do not torque the hose
 - Do not overbend the hose
 - Do not compress the hose
2. **Calculate the live length of the assembly** - The live length of the assembly is the amount of active (flexible) hose in an assembly; that is, the hose between the braid collars (refer to pages 23-24 for formulas to help calculate live length for a variety of common hose installations).
3. **Calculate the overall length of the assembly** - Overall length is equal to the live length plus the lengths of the braid collars and fittings. When adding fitting lengths, be aware that the points from which measurements should be taken vary for different fitting types. When calculating overall length for assemblies with threaded fittings, remember to account for the length of thread that is lost by threading into the mating connection (refer to Thread Allowance chart on page 36 in the Technical Section).



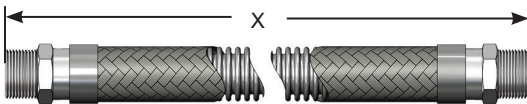
JIC/SAE-type fittings are measured from the seat of the fitting



Elbows and other fittings with a radius are measured from the centerline of the fitting



Flanges are measured from the flange face or from the face of the stub end if one is used



Threaded fittings are measured to the end of the fitting

For assistance in making any calculation or for dimensional information on fittings, please contact Hose Master's Inside Sales Department.

LENGTH CONSIDERATIONS

For the following formulas:

L = Live length of hose (inches)

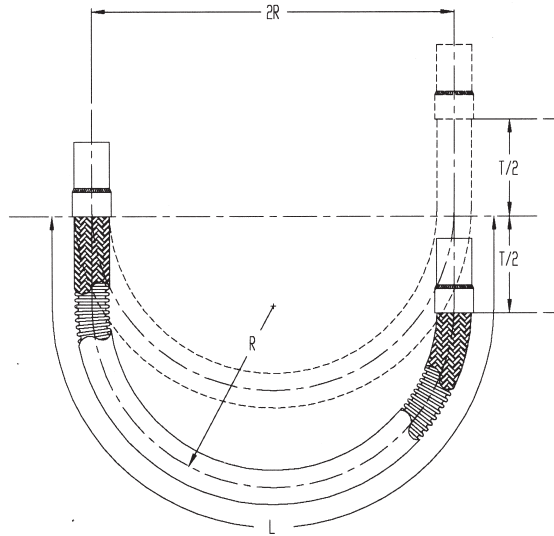
T = Travel (inches)

S = Hose outside diameter (see product data pages 9-18)

Verify that the installed radius is greater than the stated Minimum Bend Radius for the hose at the required working pressure.

Verify that the centerline of the hose remains in the same plane during cycling to prevent twisting the assembly.

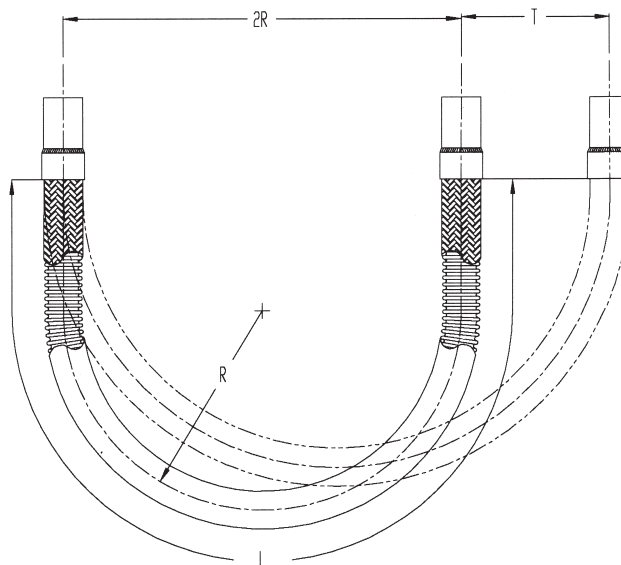
CONSTANT RADIUS TRAVELING LOOP (A-Loop)



Formula: $L = 4R + 1/2T$

R = Installation radius in this formula

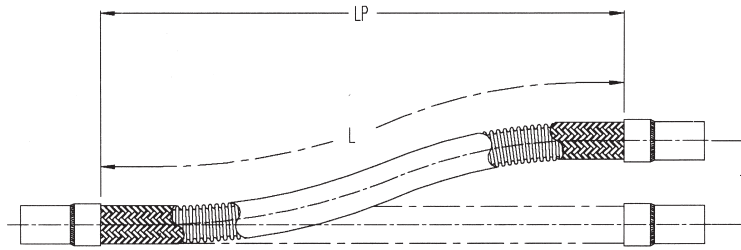
VARIABLE RADIUS TRAVELING LOOP (B-Loop)



Formula: $L = 4R + 1.57T$

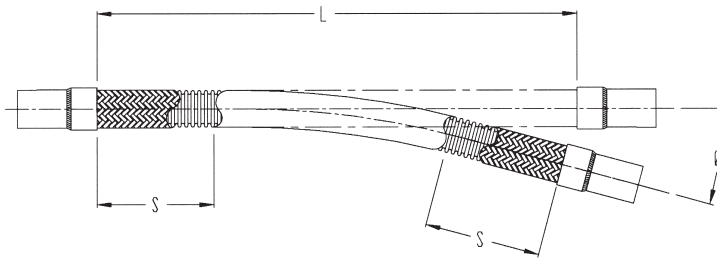
R = Installation radius in this formula

LATERAL OFFSET



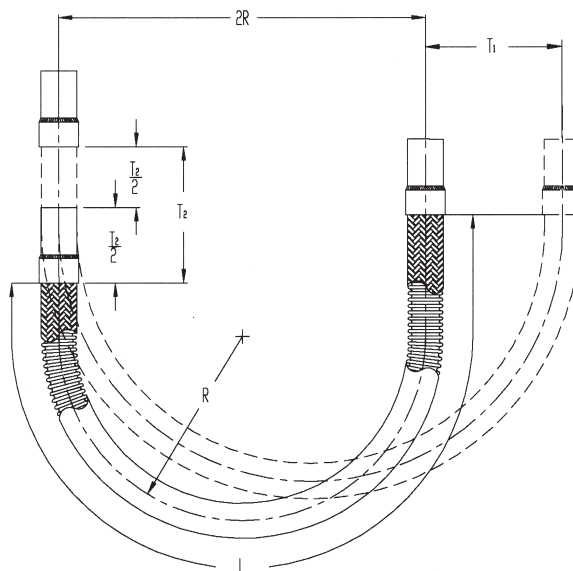
Formula: $L = \sqrt{20R \times T}$ $L_p = \sqrt{L^2 - T^2}$
R = Hose minimum bend radius in this formula

ANGULAR DEFLECTION



Formula: $L = 2S + (\theta/57.3)R$
R = Hose minimum bend radius in this formula

VERTICAL LOOP WITH MOVEMENT IN TWO DIRECTIONS (Combination Loop)



Formula: $L = 4R + 1.57T_1 + (T_2/2)$
R = Hose installation radius in this formula

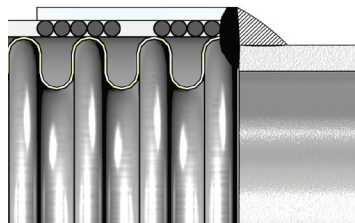
Corrugated metal hose is used in a very broad spectrum of applications. Just as the hose, fittings, and other assembly parts must be tailored to suit the demands of the service, so too must the methods of joining these components. While standard production joining methods work very well for the majority of service demands, the following extremes may dictate special joining or fabrication techniques:

1. Pressures
2. Temperatures
3. Corrosion
4. Other conditions

Hose Master has developed specialized welding, brazing, joining, and fabrication procedures to assure the integrity and serviceability of metal hose assemblies in even the most extreme applications.

The fabrication options and services to be considered are:

1. Specialized attachment techniques
2. Testing options
3. Additional cleaning requirements
4. Packaging

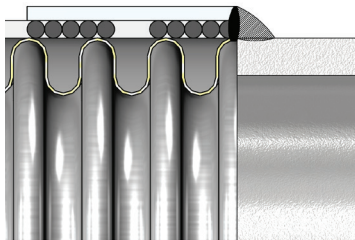


INDUSTRY STANDARD

This method will be used unless another method is specified.

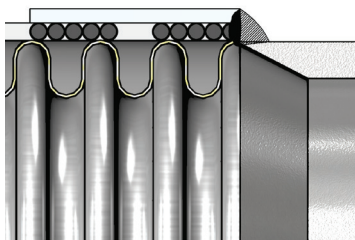
Standard fabrication of an assembly generally consists of:

1. Cutting the hose and braid through a hose corrugation valley
 2. Installing a braid collar over each end of the hose
 3. Trimming of any excess braid
 4. "Cap" welding the hose, braid, and braid collar together
 5. Cleaning the cap weld surface
 6. Placement and alignment of a fitting on the cap weld
 7. "Attachment" welding the fitting to the cap weld
- Silver brazing is also available, consult factory



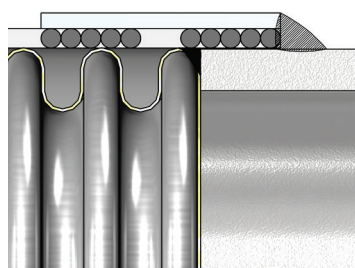
HALF-CORRUGATION

Standard fabrication sometimes leaves a portion of the cut corrugation, or corrugation "lip," just under the base of the fitting. In specialized applications, this residual lip may not be desirable. To prevent any exposed corrugation edges from causing damage, the hose can be specially prepared and welded to remove the lip.



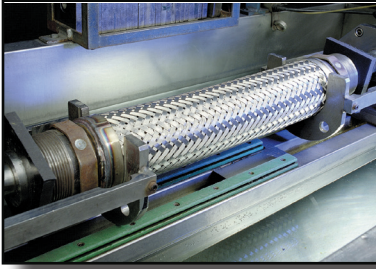
SMOOTH TRANSITION WELD

For applications in which corrosion is a concern, all crevices and fissures must be minimized. Specialized hose and fitting preparation, in conjunction with proprietary welding techniques, is available to provide a full penetration hose-to-fitting weld that is smooth and crevice-free.



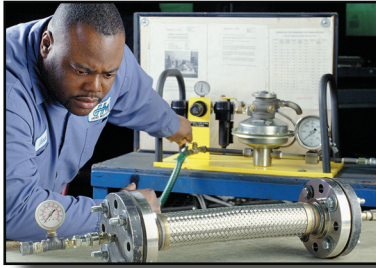
BRAID-OVER CONSTRUCTION

Assemblies operating at the upper limits of their rated working pressure, or in severe service, may benefit from a braid-over construction. The fitting is first expanded and then welded to the unbraided hose. Then the braid is drawn over the end of the hose and welded to the side of the fitting. This technique reduces the amount of heat introduced into the braid wires, nearly eliminates the heat-affected zones of the cap and attachment welds, and maximizes the wire strength. Braid-over construction may also be used for specific high-cycle applications.



STANDARD LEAK TESTING

Every corrugated hose assembly is leak tested prior to shipment. Standard testing consists of pressurizing the assembly with air and then submerging the entire assembly under water. This method is reliable and sufficient for the majority of applications.



HYDROSTATIC TESTING

While the standard test is designed to detect leaks, hydrostatic testing is designed to test the assembly's strength. Testing of an assembly to its full permissible test pressure can be economically and accurately accomplished by filling the assembly with liquid while concurrently evacuating all air. The assembly is then hydrostatically pressurized using high-pressure pumps and the test pressure is maintained for a predetermined period of time.



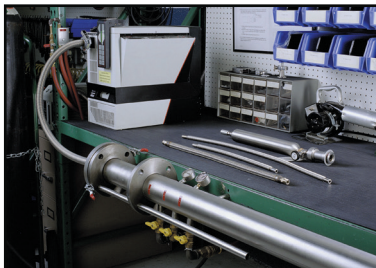
HIGH-PRESSURE GAS

Testing with air under water, at pressures of up to 2500 psi, is available for specialized applications. For a more sensitive test, the use of gases, such as nitrogen or helium, can be requested.



DYE PENETRANT

Dye penetrant testing is available for both leak and weld bead inspection, in accordance with Hose Master procedures or to customer-specified standards.



HELIUM MASS SPECTROMETER

This is the most sensitive leak detection method generally available. The standard test method is to attach the assembly to a mass spectrometer and generate a very high vacuum in the assembly. The exterior of the assembly is then flooded with helium. The relatively tiny helium atoms penetrate even very small openings and are drawn into the mass spectrometer where they are detected and the leak size is quantified. Helium Mass Spectrometer testing can be modified to satisfy customer or regulatory agency requirements.

Note: Always test an assembly with a medium that has a smaller molecular size than the service required.

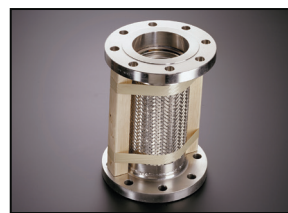


CLEANING



Hose Master's proprietary methods of manufacturing corrugated hose yields a very clean product. However, specialized cleaning for specific applications such as Clean and Degrease to CGA G-4.1 and Ultrasonic cleaning for BioPharm applications, are available upon request. Contact Hose Master's Inside Sales Department for details.

PACKAGING



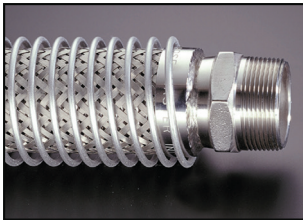
All assemblies are shipped with protectors applied over sealing surfaces, such as threads and flange faces. Spacer bars are installed on all shorter double-flanged assemblies to prevent compression of the assembly during shipping and handling. Special packaging is available to suit customer requirements, including crating, plastic bagging, labeling, and custom fitting protectors.

Metal hose assemblies often require special accessories or components to ensure long service life in severe applications, or to make the assemblies easier to use. There are many accessories that may be specified, including:

- Guards, made from metal and other materials, can be provided to protect an assembly from overbending, abrasion, impact, and thermal damage.
- Jackets and tracer hoses are used with corrugated hose assemblies to keep certain media at elevated or reduced temperatures so that it can be conveyed easily.
- A sacrificial bronze braid can be inserted between the hose and the stainless steel braid to improve cycle life.

One or several accessories can be easily combined with an assembly to more efficiently transport media, protect the assembly, or both.

This is not an exhaustive list of possible accessories, please consult Hose Master's Inside Sales Department for details.



SPRING GUARD

When there is potential for damaging an assembly in service, a guard can be easily installed during fabrication. This type of guard consists of a metal spring that is attached behind the fitting. The style of guard can be tailored to meet the specific application and the type of hose.



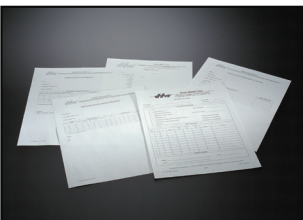
PROTECTIVE COVER

If the potential for impact or high-temperature damage is not severe, or if the additional weight and bulk of a full-metal guard is unacceptable, rubber or plastic scuff guards can be installed to protect the corrugated hose and braid.



INSULATING JACKET

If the corrugated hose is to convey high-temperature media, and there is a potential for skin contact, an insulated protective jacket is available. The jacket consists of braided fiberglass insulation, covered and impregnated with silicone rubber that is then installed over the corrugated hose and sealed. The jacket can also be used to insulate the corrugated assembly and either prevent ambient heat from being conveyed to the media or to reduce heat loss.



CERTIFICATIONS

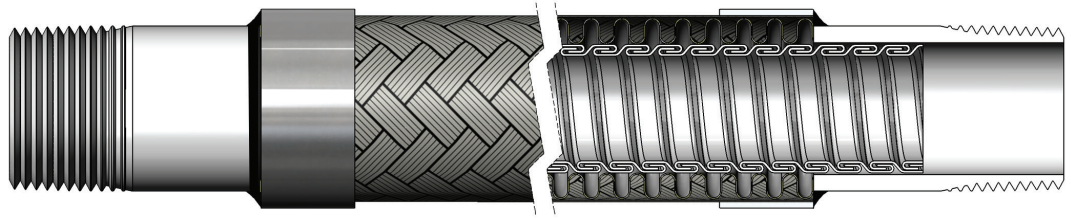
Standard written certifications for materials or inspections can be supplied for corrugated hose or assemblies. Certifications of conformance to specific customer requirements, such as military certifications, PMI (Positive Material Identification), and PED are also available upon request.



TAGGING

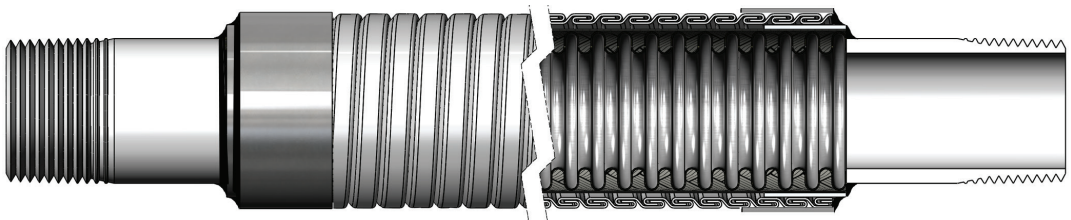
A variety of tags and identifications can be affixed to assemblies. These include cardboard, plastic, and metal tags. Serial numbers, application information, assembly performance capabilities, and other customer-specific information can be provided either on tags or permanently engraved onto one or both braid collars.

LINER

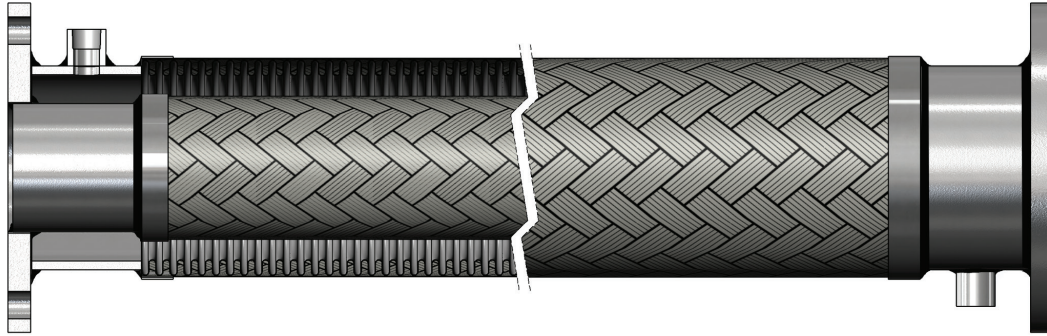


An interlocked hose or liner is often installed inside a corrugated hose assembly. The liner commonly serves two purposes while still maintaining the full working pressure of the corrugated hose. The first is to protect the hose corrugations from excessive media velocities. Media speeds can induce resonant vibrations in the corrugations, causing rapid fatigue and subsequent fracturing of the hose wall. The liner provides a relatively smooth surface for the media and, by avoiding the media impacting on the corrugation valleys, reduces the chances of harmonic resonance. The second purpose for a liner is abrasion resistance. Even slightly abrasive media flowing at medium-to-high speeds can cause premature wear of the interior surfaces of the corrugated hose. The liner provides a smooth flow path, as well as a relatively thick layer of abrasion-resistant metal between the media and the corrugated hose. The liner will also help reduce pressure loss due to friction between the media and corrugated hose. Proper fit between the hoses is essential for good performance. Because Hose Master makes both the corrugated hose and liners, a perfect fit is assured.

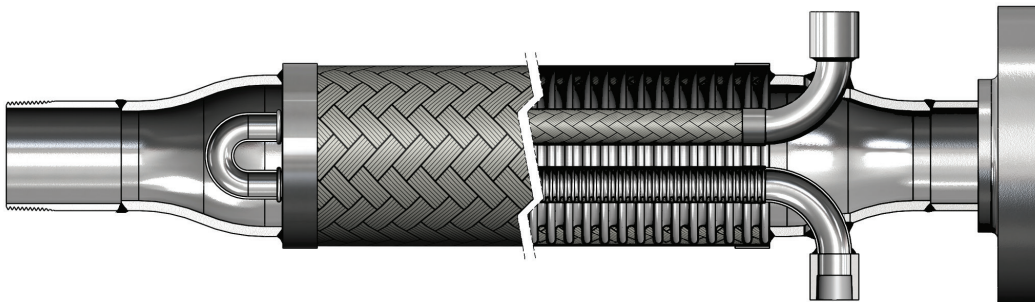
ARMOR/BEND RESTRICTER



Applications in which the corrugated hose is subjected to external abrasion, molten material splash, or impact damage may require a protective armor or guard along all or a portion of its length. A guard is typically made from interlocked or squarelocked metal hose and is welded to the assembly. Note that the bend restricter has a bend diameter equal-to or greater-than the corrugated hose it is protecting.



A jacketed assembly consists of a “hose within a hose.” An inner or primary media-conveying hose is enclosed or jacketed by a larger-diameter hose. The hoses are joined at each end by specially designed fittings so that there is no media pathway between the two hoses. Jacketed assemblies are often specified when the primary media must be kept at either an elevated or cryogenic temperature. Steam is often circulated through the jacket hose to keep a viscous material in the inner hose hot and easily conveyed. A vacuum can also be pulled on the jacket hose to insulate cryogenic liquids being conveyed in the inner hose.



Traced assemblies are similar in concept to jacketed assemblies in that there is an inner, smaller-diameter hose encased by a single, larger-diameter hose. Where jacketed assemblies surround the media with heat or cold, traced assemblies have the media surround the hose containing the heating or cooling element. The tracer, or inner hose, may also be installed in a long “U” shaped loop within the outer hose, with the steam inlet and outlet at the same end of the assembly.

ABRASION

External damage to a hose assembly caused by its being rubbed on a foreign object.

AMBIENT/ATMOSPHERIC CONDITIONS

The surrounding conditions, such as temperature, pressure, and corrosion, to which a hose assembly is exposed.

ANGULAR DEFLECTION

The displacement that occurs when an assembly is bent into a single curve, expressed as an angle.

ANNULAR

Refers to the convolutions on a hose that are a series of complete circles or rings located at right angles to the longitudinal axis of the hose (sometimes referred to as "bellows").

APPLICATION

The service conditions that determine how a metal hose assembly will be used.

ARMOR GUARD OR CASING

Flexible interlocked or squarelocked tubing placed over the entire length of a hose or in short lengths at the end of a metal hose, to protect it from physical damage and to limit the bending radius.

ATTACHMENT

The method of fixing end fittings to flexible metal hose, i.e., welding, brazing, soldering, swaging, bonding, or mechanical.

AXIAL MOVEMENT

Compression or elongation along the longitudinal axis.

BEAMED BRAID

Braid construction where the strands of wire in each carrier are parallel.

BEND RADIUS

The radius of a bend measured to the hose centerline, as recommended by the manufacturer.

BEND RADIUS, DYNAMIC

The radius at which constant or continuous flexing occurs.

BEND RADIUS, MINIMUM

The smallest radius at which a hose can be used.

BEND RADIUS, STATIC

The smallest fixed radius to which a hose can be subjected.

BRAID

A flexible wire sheath surrounding a metal hose that prevents the hose from elongation due to internal pressure. Braid is composed of a number of wires wrapped helically around the hose while at the same time going under and over each other in a basket weave fashion.

BRAID SLEEVE/RING/FERRULE/COLLAR

A ring made from tube or metal strip placed over the ends of a braided hose to contain the braid wires for attachment of fitting and ferrule, and to immobilize heat-affected corrugations.

BRAID WEAR

Motion between the braid and corrugated hose which normally causes wear on the outside diameter of the corrugation and the inside diameter of the braid.

BRAIDED BRAID

In this braid, the strands of wire on each carrier of the braiding machine are braided together, and then braided in normal fashion, hence the term "braided braid".

BRAZING

A process of joining metals using a non-ferrous filler metal with a melting point that is lower than the "parent metals" to be joined.

BUTT WELD

A process in which the edges or ends of metal sections are butted together and joined by welding.

CASING (See ARMOR)

CONTROLLED FLEXING

Occurs when the hose is being flexed regularly, as in the case of

connections to moving components. Examples: platen presses and thermal growth in pipe work.

CONVOLUTION/CORRUGATION

The annular or helical flexing member in corrugated or stripwound hose.

CORROSION

The chemical or electro-chemical attack of a media upon a hose assembly.

CYCLE LIFE

The number of cycles completed by an assembly before failure.

CYCLE-MOTION

The movement from normal to extreme position and return.

DEVELOPED LENGTH/OVERALL LENGTH

The length of a hose plus fittings required to meet the conditions of a specific application.

DOG-LEG ASSEMBLY

Two hose assemblies joined by a common elbow.

DUPLEX ASSEMBLY

An assembly consisting of two hose assemblies - one inside the other, and connected at the ends. Also known as "jacketed assemblies."

EROSION

The wearing away of the inside or outside convolutions of a hose caused by the flow of the media conveyed, such as wet steam, abrasive particles, etc.

FATIGUE FAILURE

Failure of the metal structure associated with/due to the flexing of metal hose or bellows.

FERRULE (See BRAID SLEEVE)

FITTING/COUPLING

A loose term applied to the nipple, flange, union, etc., attached to the end of a metal hose.

FLOW RATE

Pertains to a volume of media being conveyed in a given time period, e.g., cubic feet per hour, pounds per second, gallons per minute, etc.

FREQUENCY

The rate of vibration or flexure of a hose in a given time period, e.g. cycles per second (CPS), cycles per minute (CPM), cycles per day (CPD).

HELICAL

Used to describe a type of corrugated hose having one continuous convolution resembling a screw thread.

HELICAL WIRE ARMOR/SPRING GUARD

To provide additional protection against abrasion. Metal hoses can be supplied with an external round or oval section wire spiral.

INSIDE DIAMETER (I.D.)

The diameter inside the hose corrugation.

INTERLOCKED/SQUARELOCKED HOSE

Formed from profiled strip and wound into flexible metal tubing with no subsequent welding, brazing, or soldering. May be made pressure-tight by winding in strands of packing. Refer to Stripwound catalog.

LAP WELD (LW)

Type of weld in which the ends or edges of the metal overlap each other.

LATERAL OFFSET

The perpendicular distance between parallel fitting axes of an assembly.

LINER

Flexible sleeve used to line the inside diameter of hose when conveying a high-velocity media, also prevents erosion.

LIVE LENGTH

The amount of active (flexible) length of hose in an assembly. Does not include the length of fittings and ferrules.

LOOP INSTALLATION

The assembly is installed in a loop or "U" shape and is most often used when frequent and/or large amounts of motion are involved.

MEDIUM, MEDIA

The substance(s) being conveyed through a system.

NOMINAL DIAMETER

Indicates the approximate inside diameter.

OFFSET-LATERAL, PARALLEL

The distance that the ends of a hose assembly are displaced in relation to each other as a result of connecting two misaligned terminations in a system, or intermittent flexure required in a hose application.

OPERATING CONDITIONS

The pressure, temperature, motion, and environment to which a hose assembly is subjected.

OUTSIDE DIAMETER (O.D.)

The external diameter of a metal hose, measured at the top of the corrugation or braiding.

PERCENT OF BRAID COVERAGE

The percent of the surface area of a hose that is covered by braid.

PITCH

The distance between the two peaks of adjacent corrugations or convolutions.

PLY, PLYS

The number of individual thicknesses of metal used in the construction of a wall of the convoluted hose.

PRESSURE

Usually expressed in pounds per square inch (psi).

PRESSURE, BURST

Failure of the hose where the braid fails in tensile, or the hose ruptures, or both, due to the internal pressure applied.

PRESSURE, DEFORMATION

The pressure at which the convolutions of a hose become permanently deformed.

PRESSURE, MAXIMUM ALLOWABLE WORKING

The maximum pressure at which a hose or hose assembly is designed to be used.

PRESSURE, PULSATING

A rapid change in pressure above and below the normal base pressure, usually associated with reciprocating type pumps. This pulsating pressure can cause excessive wear between the braid and the tops of the hose convolutions.

PRESSURE, SHOCK

A sudden increase of pressure in a hydraulic or pneumatic system which produces a shock wave. This shock can cause severe permanent deformation of the hose corrugations, as well as rapid failure due to metal fatigue.

PRESSURE, STATIC

A non-changing, constant pressure.

PRESSURE, WORKING

The pressure, usually internal but sometimes external, imposed on a hose during operating conditions.

RANDOM MOTION

The uncontrolled motion of a metal hose, such as occurs in manual handling.

SAFETY FACTOR

The relationship of working pressure to burst pressure.

SPLICE

A method of joining two sections of hose.

SQUARELOCKED (See INTERLOCKED)

Refer to Stripwound catalog.

SQUIRM

A form of failure in which the hose is deformed into an "S" or "U" bend as the result of excessive internal pressure being applied to unbraided corrugated hose while its ends are restrained, or in a braided corrugated hose which has been axially compressed.

STRESS CORROSION

A form of corrosion in stainless steel normally associated with chlorides.

STRIPWOUND (See INTERLOCKED)

Refer to Stripwound catalog.

TIG WELD/GTAW

The gas tungsten arc welding process sometimes referred to as a "shielded arc" or "heliarc."

TRAVELING LOOP

A general classification of bending wherein the hose is installed in a U-shaped configuration.

TRAVELING LOOP, CLASS A LOOP

An application wherein the radius remains constant and one end of the hose moves parallel to the other end.

TRAVELING LOOP, CLASS B LOOP

A condition wherein a hose is installed in a U-shaped configuration and the ends move perpendicular to each other so as to enlarge or decrease the width of the loop.

TORQUE (TORSION)

A force that produces, or tends to produce, rotation of or torsion about the longitudinal axis of a hose assembly while the other end is fixed.

VACUUM

Negative pressure or suction.

VELOCITY

The speed at which the medium flows through the hose.

VELOCITY RESONANCE

The vibration of convolutions due to the buffeting of a high-velocity gas or liquid flow.

VIBRATION

Low-amplitude motion occurring at high frequency.

WELDING

The process of localized joining of two or more metallic components by means of heating their surfaces to a state of fusion, or by fusion with the use of additional filler material.

TEMPERATURE DERATING

To calculate a working pressure derated for elevated temperature, you must first obtain the derating factors for all of the assembly components (i.e. hose, braid, fittings, etc.) from the following chart. Multiply the hose working pressure shown in the catalog by the lowest rating obtained below to determine the derated working pressure. Note: The working pressure of an assembly at elevated temperatures may be affected by fitting type, material, and method of attachment.

Working Pressure Derating Factor													
Temp. in Degrees F	T304 T301*	T304L	T316	T316L	T321	C276	Monel 400 & C22	Inconel 600	Inconel 625	Carbon Steel**	Alum. 3003 H14	Bronze	Copper
70	1.00	1.00	1.00	1.00	1.00	1.00	1.00	1.00	1.00	1.00	1.00	1.00	1.00
100	1.00	1.00	1.00	1.00	1.00	1.00	1.00	1.00	1.00	1.00	1.00	0.97	1.00
200	1.00	1.00	1.00	1.00	1.00	1.00	0.88	1.00	1.00	1.00	1.00	0.89	0.80
300	1.00	1.00	1.00	1.00	1.00	1.00	0.82	1.00	1.00	1.00	0.64	0.83	0.78
400	0.94	0.93	0.97	0.93	1.00	1.00	0.79	1.00	1.00	1.00	0.34	0.78	0.50
500	0.88	0.86	0.90	0.86	0.96	0.99	0.79	1.00	0.97	0.95			0.13
600	0.82	0.81	0.85	0.81	0.91	0.93	0.79	1.00	0.95	0.87			
650	0.81	0.79	0.84	0.79	0.89	0.90	0.79	1.00	0.94	0.85			
700	0.80	0.77	0.82	0.77	0.87	0.88	0.79	1.00	0.93	0.83			
750	0.78	0.75	0.81	0.75	0.86	0.86	0.79	1.00	0.93	0.65			
800	0.76	0.74	0.80	0.74	0.84	0.84	0.79	1.00	0.93	0.54			
850	0.75	0.72	0.79	0.72	0.84	0.83	0.79	0.99	0.93	0.44			
900	0.73	0.71	0.78	0.71	0.83	0.82	0.76	0.95	0.93	0.33			
950	0.72	0.69	0.77	0.69	0.81	0.81	0.71	0.95	0.93	0.23			
1000	0.69	0.67	0.77	0.67	0.81	0.80	0.48	0.42	0.93				
1050	0.61	0.65	0.73	0.65	0.70	0.68		0.27	0.93				
1100	0.49	0.62	0.62	0.61	0.55	0.55		0.20	0.69				
1150	0.39	0.53	0.49	0.52	0.41	0.47			0.57				
1200	0.30	0.38	0.37	0.38	0.32	0.36			0.36				
1250	0.24	0.28	0.28	0.28	0.25	0.29							
1300		0.21	0.21	0.21									

* T301 is not listed in B31.1, but its tensile and yields are identical to T304 per ASM Metals Reference book 3rd Ed. Page 364

**Do not use for temperatures lower than 32°F

VELOCITY

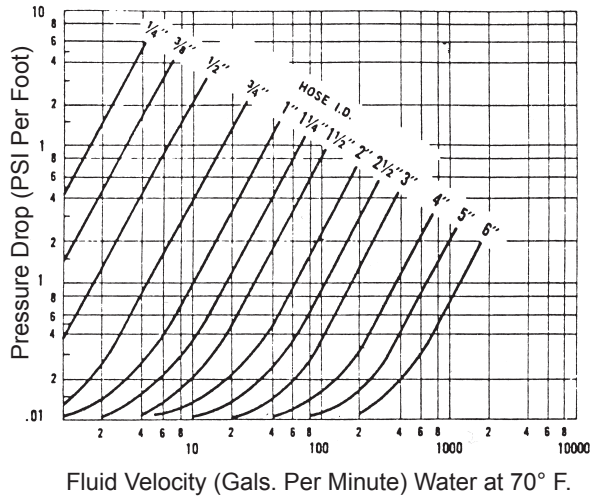
When gas or liquid being conveyed in a corrugated metal hose exceeds certain limits, resonant vibration can occur. Resonance may cause very rapid failure of the assembly. In those applications where product velocities exceed the limits shown in the chart below, a revision of the assembly design might include:

1. Addition of an interlocked metal hose liner
2. An increase in the corrugated hose I.D.
3. A combination of the above

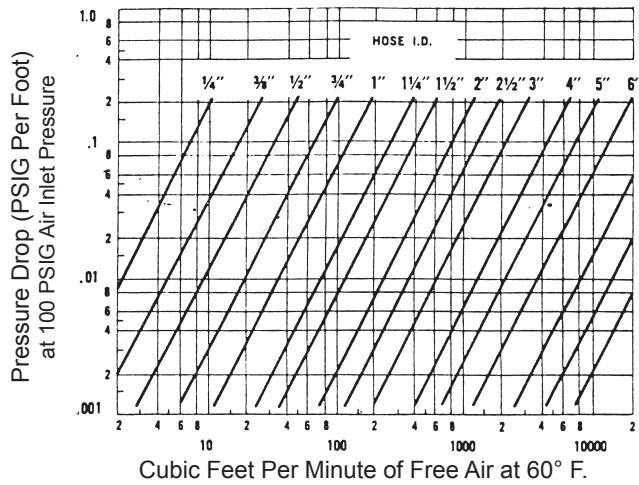
Velocity in Metal Hose				
Installation Configuration	Maximum Product Velocity (Feet/Second)			
	Unbraided		Braided	
	Dry Gas	Liquid	Dry Gas	Liquid
Straight Run	100	50	150	75
45 Degree Bend	75	40	115	60
90 Degree Bend	50	25	75	40
180 Degree Bend	25	12	38	19

Pressure drop in a piping system is often a concern for the designer. Compared to rigid pipe, there is always a greater pressure drop in corrugated metal hose. The following graphs are offered as aids in estimating pressure drop in corrugated hose conveying water and air. The values derived are approximate and apply only to straight-line installations. Bends and fittings can increase the pressure drop.

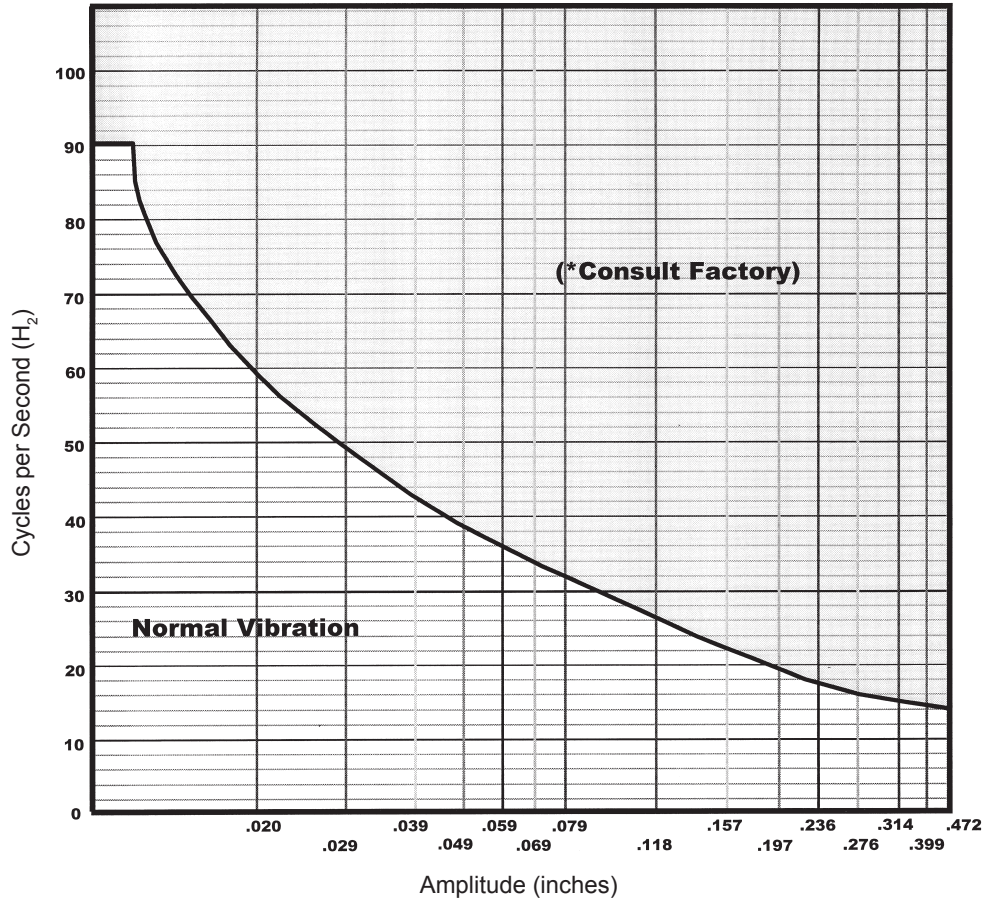
Pressure Drop Graph for Water



Pressure Drop Graph for Air

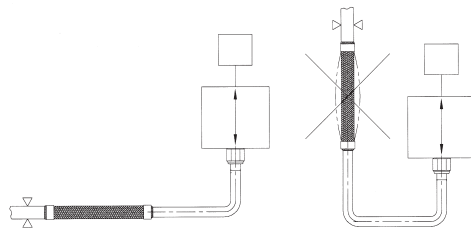


For Air Inlet Pressures Other Than 100 PSIG: $P.D. = P.D. @ 100 \text{ PSIG} \left(\frac{100 + 14.7}{P + 14.7} \right)$

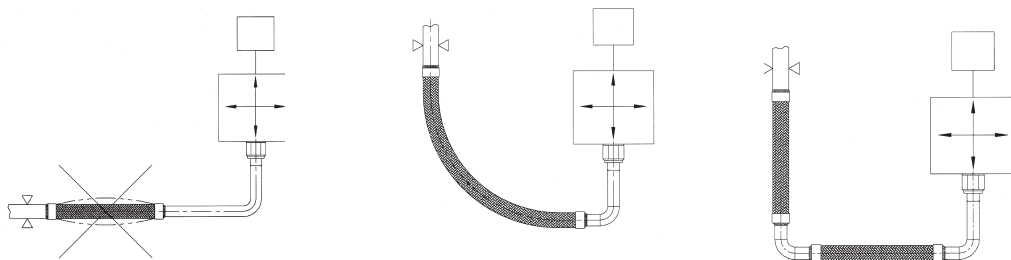


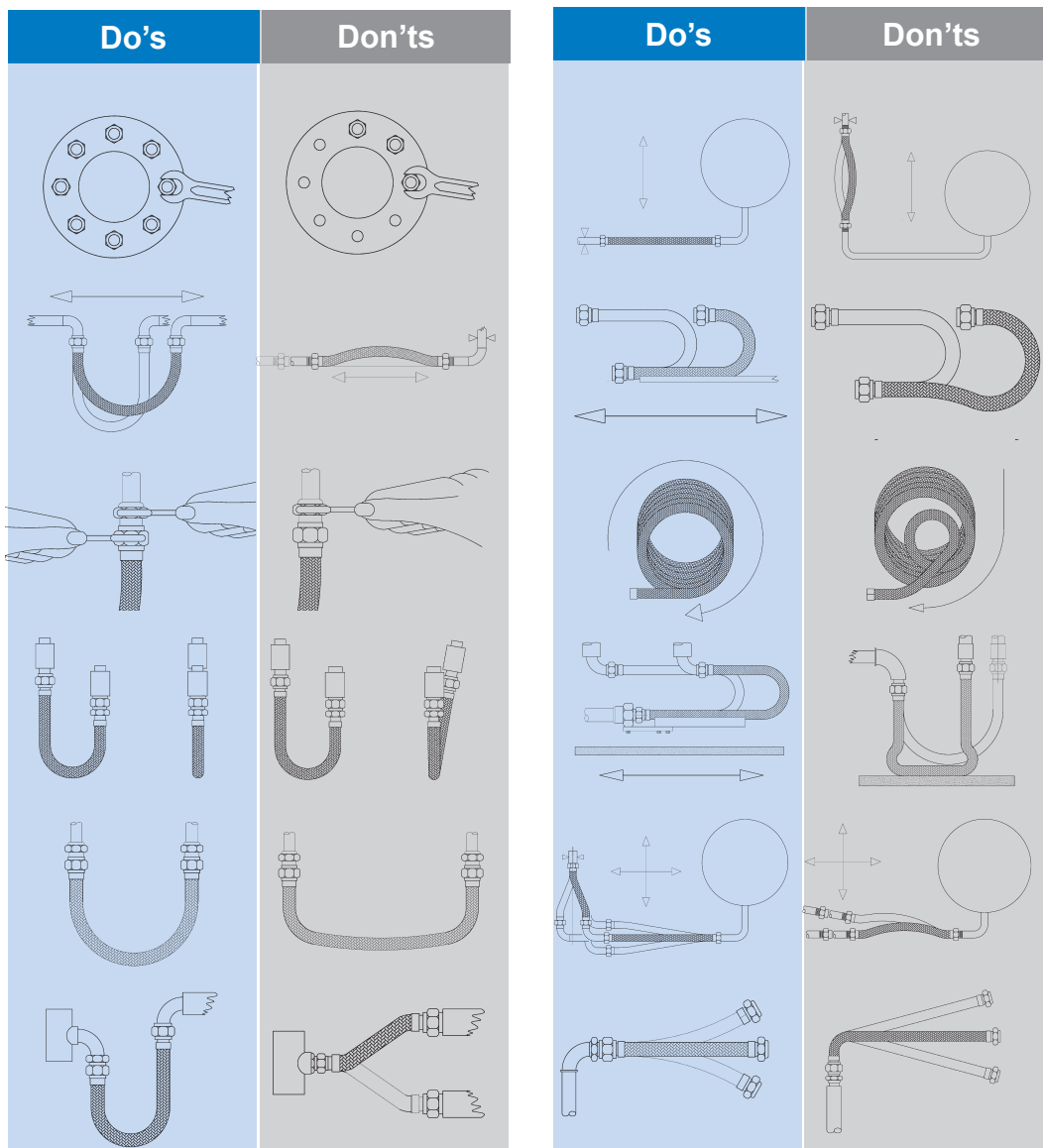
The above graph is representative and should only be used as a guide for estimation purposes. If there are any questions, or your application is near the "Consult Factory" region, please contact Hose Master Inside Sales.

When installing a hose assembly in a vibration application, make sure to install it so the axis of the hose is perpendicular to the direction of the vibration.

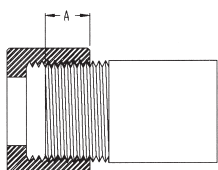


If there is vibration in more than one direction, either install a longer hose bent at 90° or install a "Dog Leg" assembly.





THREAD ALLOWANCE



When calculating the overall length (OAL) of a hose assembly that has a pipe thread as one or both end connection(s), consideration must be given to thread engagement. For example, using the chart below, a hose assembly with a 1" male pipe on one end would have 0.66" added to the OAL to compensate for the length of thread that will be engaged during installation.

Nominal Pipe Size (in.)	1/4	3/8	1/2	3/4	1	1 1/4	1 1/2	2	2 1/2	3	4	5	6
Thread Allowance (in.) (Dim "A")	0.40	0.41	0.53	0.55	0.66	0.68	0.68	0.70	0.93	1.01	1.09	1.18	1.20

SATURATED STEAM

Absolute Pressure (PSIA)	Gauge Pressure (PSIG)	Temp. Degrees Fahrenheit	Temp. Degrees Centigrade	Specific Volume (cu. ft. per lb.)
15	0.3	213	101	26.3
20	5.3	228	109	20.1
25	10.3	240	116	16.3
30	15.3	250	121	13.7
35	20.3	259	126	11.9
40	25.3	267	130	10.5
45	30.3	274	134	9.4
50	35.3	281	138	8.5
55	40.3	287	142	7.8
60	45.3	293	145	7.2
65	50.3	298	148	6.7
70	55.3	303	151	6.2
75	60.3	308	153	5.8
80	65.3	312	156	5.5
85	70.3	316	158	5.2
90	75.3	320	160	4.9
95	80.3	324	164	4.7
100	85.3	328	164	4.4
105	90.3	331	166	4.2
110	95.3	335	168	4.0
115	100.3	338	170	3.9
120	105.3	341	172	3.7
125	110.3	344	173	3.6
130	115.3	347	175	3.5
135	120.3	350	177	3.3
140	125.3	353	178	3.2
145	130.3	356	180	3.1
150	135.3	358	181	3.0
160	145.3	364	184	2.8
170	155.3	368	187	2.7

Absolute Pressure (PSIA)	Gauge Pressure (PSIG)	Temp. Degrees Fahrenheit	Temp. Degrees Centigrade	Specific Volume (cu. ft. per lb.)
180	165.3	373	189	2.5
190	175.3	378	192	2.4
200	185.3	382	194	2.3
210	195.3	386	197	2.2
220	205.3	390	199	2.1
230	215.3	394	201	2.0
240	225.3	397	203	1.9
250	235.3	401	205	1.8
260	245.3	404	207	1.8
270	255.3	408	209	1.7
280	265.3	411	211	1.7
290	275.3	414	212	1.6
300	285.3	417	214	1.5
350	335.3	432	222	1.3
400	385.3	445	230	1.2
500	485.3	467	242	0.9
550	535.3	477	247	0.8
600	585.3	486	252	0.8
650	635.3	495	257	0.7
700	685.3	503	262	0.7
750	735.3	511	266	0.6
800	785.3	518	270	0.6
850	835.3	525	274	0.5
900	885.3	532	278	0.5
950	935.3	538	281	0.5
1000	985.3	545	285	0.4
1050	1035.3	551	288	0.4
1100	1085.3	556	291	0.4
1150	1135.3	562	294	0.4
1200	1185.3	567	297	0.4

THERMAL EXPANSION OF PIPE

(ANSI B31.1.0-1967)

Material	Temperature range: 70° F. (21° C.) to (select temperature range)														
	F° (C°)	70 (21)	200 (93)	300 (149)	400 (205)	500 (260)	600 (316)	700 (371)	800 (427)	900 (482)	1000 (538)	1100 (593)	1200 (649)	1300 (705)	1400 (760)
Carbon Steel: carbon-moly steel low-chrome steels (through 3% Cr)	A		6.38	6.60	6.82	7.02	7.23	7.44	7.65	7.84	7.97	8.12	8.19	8.28	8.36
	B	0	0.99	1.82	2.70	3.62	4.60	5.63	6.70	7.81	8.89	10.04	11.10	12.22	13.34
Intermediate alloy steels: 5 Cr Mo-9 Cr Mo	A		6.04	6.19	6.34	6.50	6.66	6.80	6.96	7.10	7.22	7.32	7.41	7.49	7.55
	B	0	0.94	1.71	2.50	3.35	4.24	5.14	6.10	7.07	8.06	9.05	10.00	11.06	12.05
Austenitic stainless steels	A		9.34	9.47	9.59	9.70	9.82	9.92	10.05	10.16	10.29	10.39	10.48	10.54	10.60
	B	0	1.46	2.61	3.80	5.01	6.24	7.50	8.80	10.12	11.48	12.84	14.20	15.56	16.92
Straight chromium stainless steels: 12 Cr, 17 Cr, and 27 Cr	A		5.50	5.66	5.81	5.96	6.13	6.26	6.39	6.52	6.63	6.72	6.78	6.85	6.90
	B	0	0.86	1.56	2.30	3.08	3.90	4.73	5.60	6.49	7.40	8.31	9.20	10.11	11.01
25 Cr-20 Ni	A		7.76	7.92	8.08	8.22	8.38	8.52	8.68	8.81	8.92	9.00	9.08	9.12	9.18
	B	0	1.21	2.18	3.20	4.24	5.33	6.44	7.60	8.78	9.95	11.12	12.31	13.46	14.65
Monel 67: Ni-30 Cu	A		7.84	8.02	8.20	8.40	8.58	8.78	8.96	9.16	9.34	9.52	9.70	9.88	10.04
	B	0	1.22	2.21	3.25	4.33	5.46	6.64	7.85	9.12	10.42	11.77	13.15	14.58	16.02
Monel 66: Ni-29 CuAl	A		7.48	7.68	7.90	8.09	8.30	8.50	8.70	8.90	9.10	9.30	9.50	9.70	9.89
	B	0	1.17	2.12	3.13	4.17	5.28	6.43	7.62	8.86	10.16	11.50	13.00	14.32	15.78
Aluminum	A		12.95	13.28	13.60	13.90	14.20								
	B	0	2.00	3.66	5.39	7.17	9.03								
Gray cast iron	A		5.75	5.93	6.10	6.28	6.47	6.65	6.83	7.00	7.19				
	B	0	0.90	1.64	2.42	3.24	4.11	5.03	5.98	6.97	8.02				
Bronze	A		10.03	10.12	10.23	10.32	10.44	10.52	10.62	10.72	10.80	10.90	11.00		
	B	0	1.56	2.79	4.05	5.33	6.64	7.95	9.30	10.68	12.05	13.47	14.92		
Brass	A		9.76	10.00	10.23	10.47	10.69	10.92	11.16	11.40	11.63	11.85	12.09		
	B	0	1.52	2.76	4.05	5.40	6.80	8.26	9.78	11.35	12.98	14.65	16.39		
Wrought iron	A		7.32	7.48	7.61	7.73	7.88	8.01	8.13	8.29	8.39				
	B	0	1.14	2.06	3.01	3.99	5.01	6.06	7.12	8.26	9.36				
Copper-nickel (70/30)	A		8.54	8.71	8.90										
	B	0	1.33	2.40	3.52										

A = mean coefficient of thermal expansion x 10⁶, in/in/°F in going from 70°F. (21° C.) to indicated temperature

B = linear thermal expansion, in/100 ft., going from 70° F. (21° C.) to indicated temperature

Multiply values of A shown by 1.80 to obtain coefficient of expansions in cm/cm/°C.

Multiply values of B shown by 8.33 to obtain linear expansion in cm per 100 m.

Instructions: To place an order or request a quotation, please complete Section I. If you need assistance in specifying an assembly, complete Section II as well as the "End Fittings" portion of Section I. When completed, fax this form to Hose Master at (216) 481-7557 or email it to insidesales@hosemaster.com.

Customer: _____

Contact: _____ Date: _____

Phone: _____ Fax: _____ Email: _____

Section I Specification Information

Request Quote: _____ (or) Place Order P.O.# _____

Quantity: _____ Date Required: _____

Hose (type and diameter): _____ Length (inches): _____ Live Length / Overall Length
Circle One

End Fittings (type and size for both ends)

End #1 Size: _____ Type: _____ Material: _____

End #2 Size: _____ Type: _____ Material: _____

Liner Required: _____ Yes _____ No If "Yes," Liner Material: _____

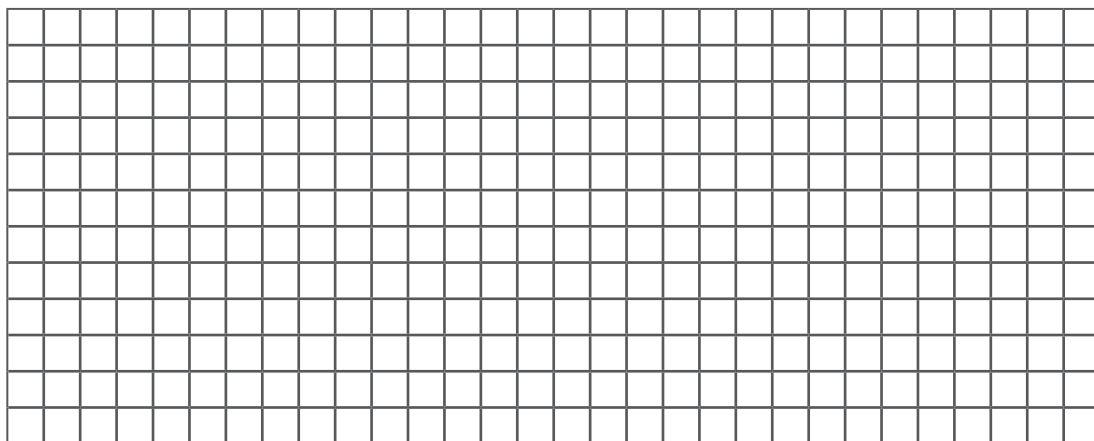
Special Fabrication: _____

Accessories: _____

Section II Application Information

Please provide the following information. Be sure that the answers are in the unit of measure stated on the form. If necessary, convert from a different unit of measure. Where appropriate, we have included the assumptions that will be made if an answer is not given.

Application Drawing: (sketch the installation and include all dimensions and motions of hose during application)



Size (inches): _____ (In the event the fittings or hose have different sizes, include all sizes and show on the application drawing)

Temperature: Media: Min. _____ °F. Max. _____ °F. Environment: Min. _____ °F. Max. _____ °F. (Assumption is 70° F. for all)

Media: _____ (Assumption is the media is compatible with all available materials)

Max. Pressure (psi): _____ Fluctuations *None / Pulsating / Shock* (Assumption is nominal pressure, no fluctuations)
Circle One

Max. Velocity (feet/second): _____ (Assumption is velocity is too slow to affect performance)

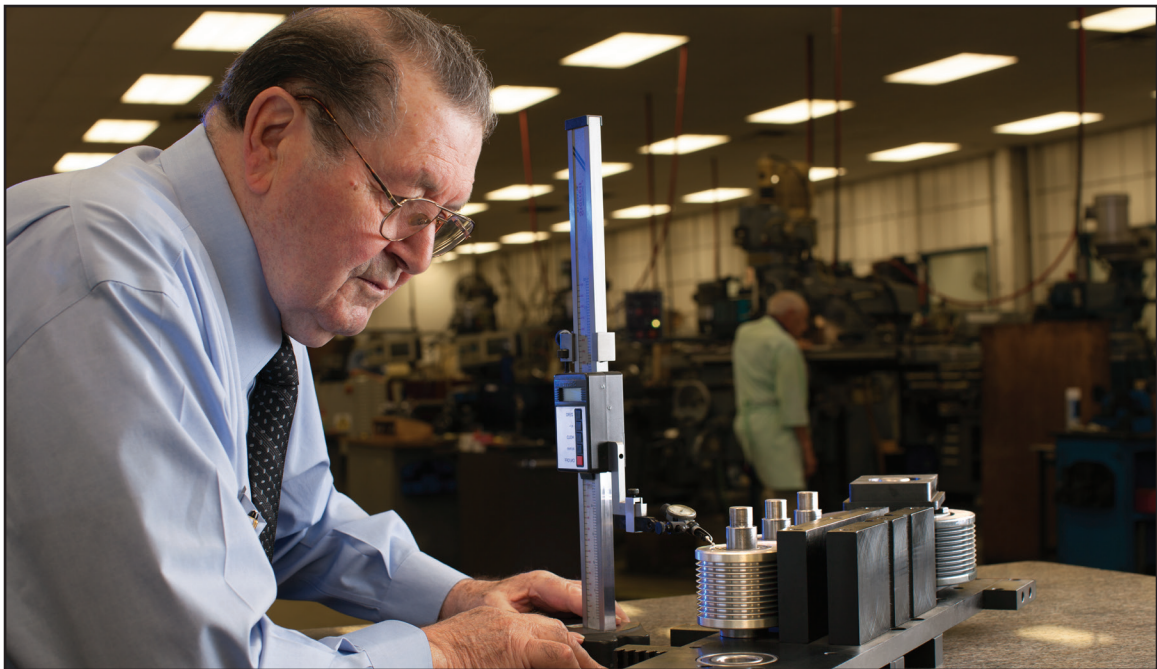
Type of Motion (From drawing above): *Static / Constant / Vibration* (Assumption is static)
Circle One

Product Engineering



- Our team of engineers is available to answer questions and provide solutions to the most complex applications
- Available on-site assistance
- Quick turnaround from concept to completion

Machine Design



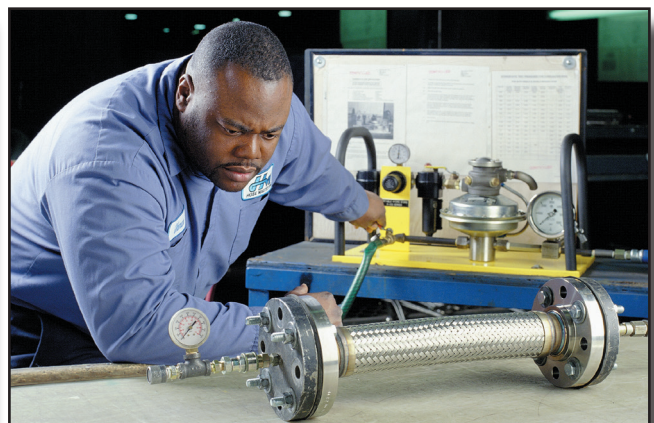
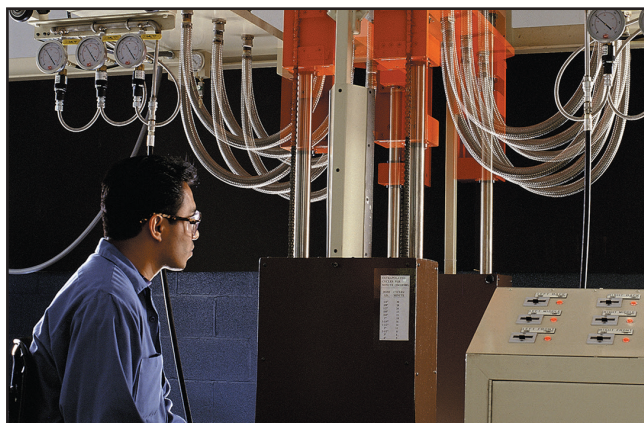
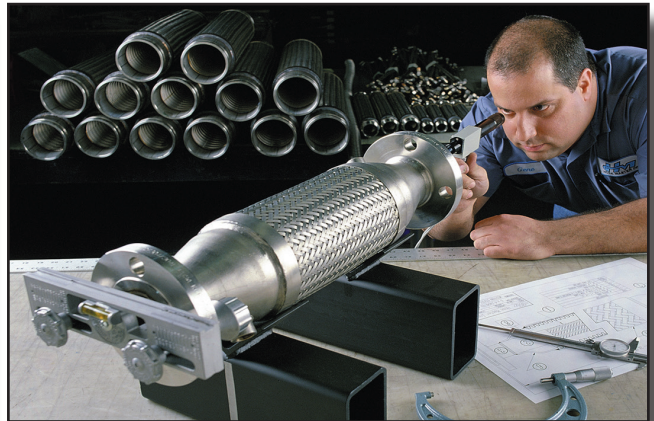
Hose Master designs and manufactures its own products and proprietary production equipment, offering innovative solutions for demanding applications.

Manufacturing, Fabricating, and Stocking Facilities



90+ Welders and large inventories enable us to respond quickly to customer demands

Testing and Certifications



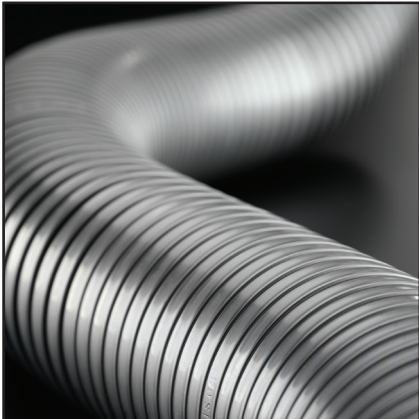
PED
Pressure
Equipment
Directive



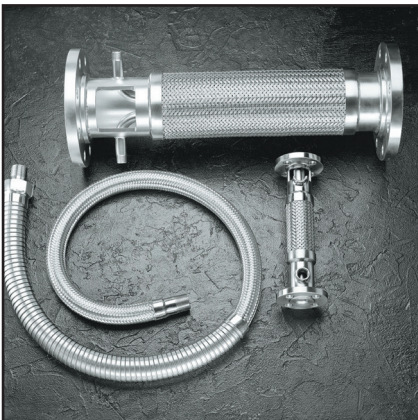
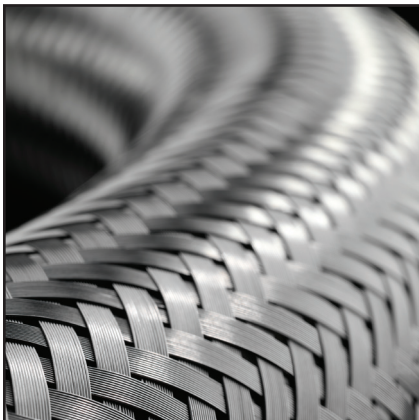
ASME IX
Certified Welders



Stripwound Metal Hose and Assemblies



Corrugated Metal Hose and Assemblies



Metal Bellows and Expansion Joints





HOSE MASTER

1233 East 222nd Street • Cleveland, Ohio 44117
(800) 221-2319 • Fax: (216) 481-7557 • www.hosemaster.com
Cleveland • Houston • Atlanta • Reno

ISO 9001
Registered Quality System

